



EXPERT 24

CUTTING PLOTTER

User Manual

Great Computer Corporation ©

NOTICE

GCC reserves the right to modify the information contained in this user manual at any time without prior notice; un-authorized modification, copying distribution or display is prohibited. All comments, queries or suggestions concerning this manual please consult with your local dealer.

Important Information

Thank you for purchasing the **Expert 24 Cutting Plotter**.

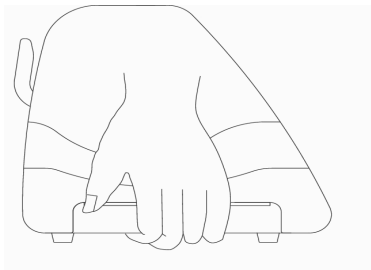
Before you use the cutting plotter, please make sure that you have read the safety precautions and instructions below.



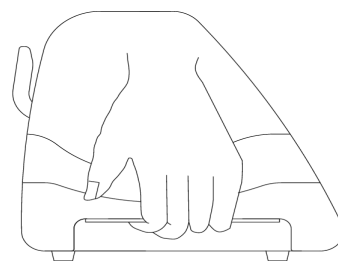
Caution

SAFETY PRECAUTIONS!

- For safety concern, please always hold the cutter firmly **from the bottom** while moving it. Do not move the cutter by clasping the depression area on both sides.



O (correct)



X (Incorrect)

- Do not shake or drop the blade holder, a blade tip can fly out.
- During an operation, do not touch any of the moving parts of this machine (such as the carriage). Also be careful to make sure that clothing and hair do not get caught.
- Always connect the power cable to a grounded outlet.
- Always use the accessory power cable which is provided. Do not wire the power cable so that it becomes bent or caught between objects.
- Do not connect the power cable to branching outlet to which other machines are also connected, or use an extension cable. There is danger of overheating and of mis-operation of the machine.
- Keep the tools away from children where they can reach.
- Always put the pinch rollers within the white marks.

Table of Contents

Important Information

1. General Information

1.1	Package Items	1-1
1.2	Product Features	1-1
1.3	The Appearance	1-2

2. Installation

2.1	Precaution	2-1
2.2	Stand & Flexible Media Support System	2-2
2.3	Blade Installation	2-5
2.4	Media Loading	2-7
	2.4.1 Loading the Sheet Media	2-7
	2.4.2 Loading the Roll Media	2-9
	2.4.3 How to change the poll size without turning off the machine?	2-9
2.5	Cable Connections	2-10
	2.5.1 USB Interface	2-10
	2.5.2 Driver Un-installation	2-13
	2.5.3 RS-232 Interface	2-16
	2.5.4 Printer Sever Shared Setting	2-16

3. Operation

3.1	The Control Panel	3-1
3.2	VLCD	3-2
3.3	File Uploader	3-5
3.4	Data Transmission	3-6
3.5	Expert 24 Print Driver setting	3-7
	3.5.1 Option Page	3-7
3.6	Reference Parameter setting for different materials	3-10

4. Basic Maintenance

4.1	Cleaning the cutting Plotter	4-1
4.2	Cleaning the Grid Drum	4-1
4.3	Cleaning the Pinch Rollers	4-2

5. Trouble Shooting

5.1	What if Expert 24 cannot Operate?	5-1
5.2	Light Indicators	5-1
5.3	Cutting Quality Problems	5-4




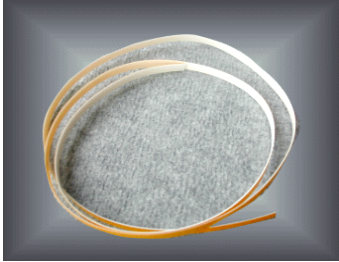





Appendix

A-1	CorelDraw instruction	A-1
A-2	Expert 24 Specification	A-2
A-3	Blade Specification	A-3
A-4	DirectCut	A-4

1. General Information

1.1 Package Items

The package of Expert 24 contents the items listed below, please check carefully. If you find any item missing, please consult your local dealer for further assistance.

Item	Quantity	
Cutting Plotter	1 Set	
Accessories	1 Set	
1. Installation CD	2. AC Power Cord	3. Desktop Support Brackets
		
4. Cutting Pad	5. USB Cable (1.8m)	6. RS-232 Cable
		
7. Tweezers	8. Paper Slicer	9. Cushion in tool carriage
		

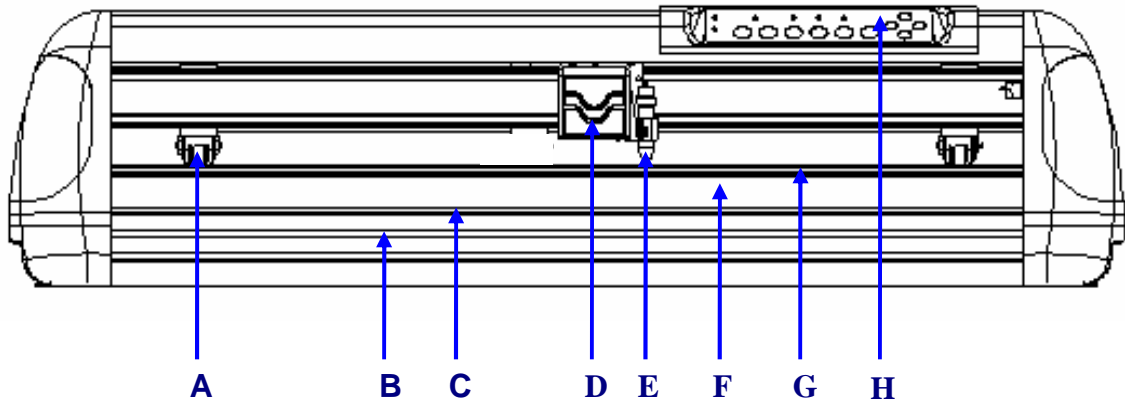
1.2 Product Features

The followings are the main features of the Expert 24 cutting plotters:

- Dual-port connectivity – USB & Serial interface.
- Up to 250 gram cutting force.
- Up to 400 mm/per second cutting speed.

1.3 The Appearance (EX-24)

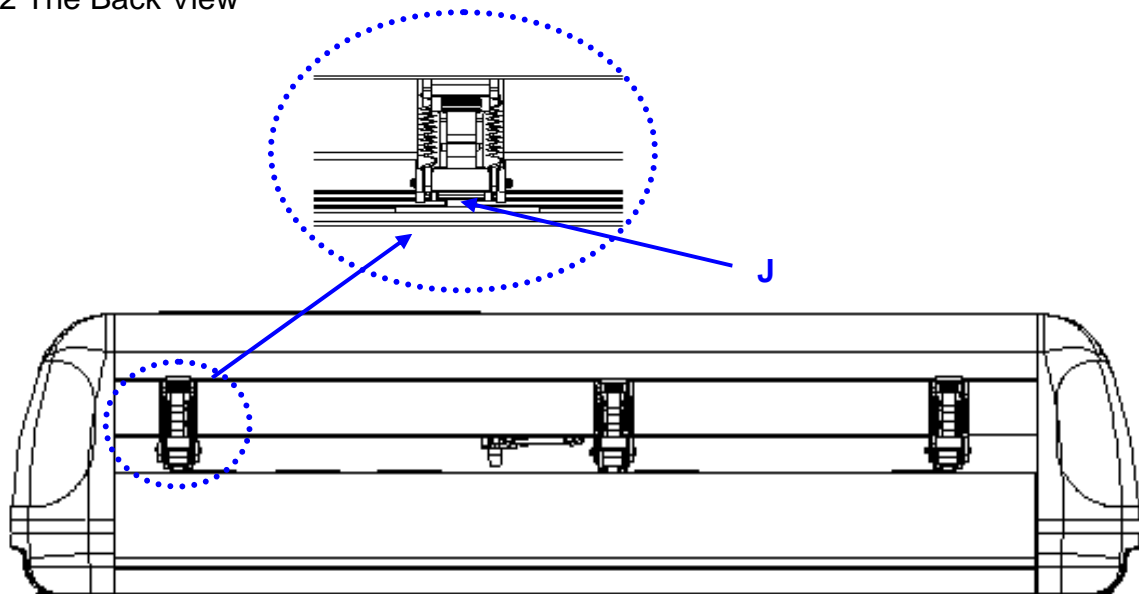
1.3.1 The Front View



【Figure 1-1】

Object	Description
A Primary Pinch Roller	To help hold the media during cutting.
B Slicing Groove	To help slice off media.
C Alignment Ruler	To align media with clear guideline marks
D Tool Carriage	To help perform cutting job with installed blade or pen.
E Blade Holder	To hold the blade.
F Platen	The surface for holding and supporting media in operation.
G Cutting Pad	To protect blade and plate in operation.
H Control Panel	To consist of 10 control keys and 6 LED lights.

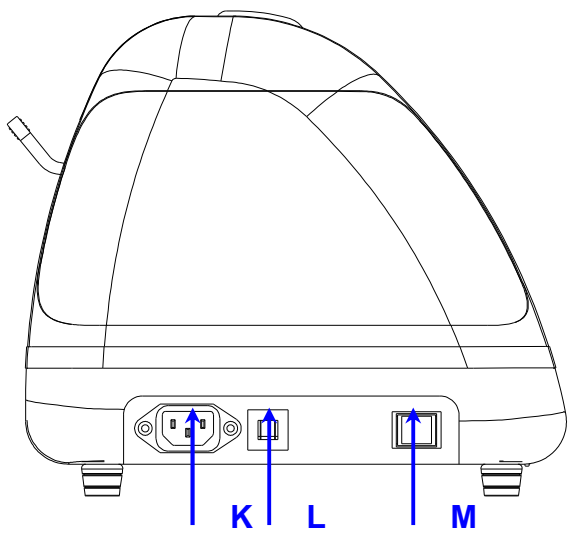
1.3.2 The Back View



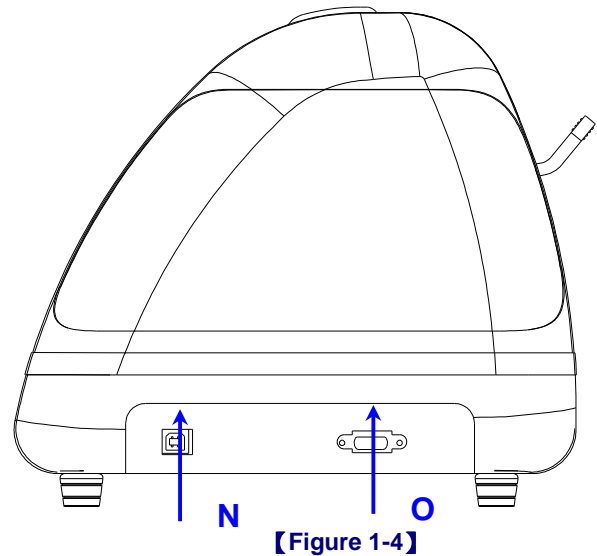
【Figure 1-2】

Object	Description
J Grid Drum	To move media back and forth in operation.

1.3.3 The Side Views



【Figure 1-3】



【Figure 1-4】

Object		Description
K	AC Power Connector	To insert the AC power cord.
L	Fuse	3Amp.
M	Power Switch	To turn on or off the machine.
N	USB Connector	To connect the machine and a computer through a USB cable.
O	Serial Interface Connector	To connect the machine and a computer through a RS-232 cable.

2. Installation

2.1 Precaution

Please read below information carefully before you start installation.

Notice 1

- Make sure the power switch is off before installing the cutting plotter.
- Carefully handle the cutter to prevent any injuries.

Notice 2 Choosing a proper place before setting up the cutting plotter

Before installing your cutting plotter, select a suitable location, which meets the following conditions.

- The machine can be approached easily from any direction.
- Keep enough space for the machine, accessories and supplies.
- Keep the working area stable, avoiding severe vibration.
- Keep the temperature between **15 and 30 °C (60-86°F)** in the workshop.
- Keep the relative humidity between **25% and 75%** in the workshop.
- Protecting the machine from dust and strong air current.
- Preventing the machine from direct sunlight or extremely bright lighting.

Notice 3 Connecting the Power Supply

Check the plug of the power cord to see if it mates with the wall outlet. If not, please contact your dealer.

- Insert the plug (male) into a grounded power outlet.
- Insert the other end (female) of power cord into the AC connector of cutting plotter.

2.2 Stand

2.2.1 Stand Installation

Please follow the procedures below for assembling the stand and the media support system.

Step 1 Please examine the supplied items in the accessory box of the stand carton before you install:

Stand is an optional item for Expert 24, Item List :

- 1 Left side vertical stand
- 1 Right side vertical stand
- 1 Support for left side
- 1 Support for right side
- 1 Stand Beam
- 2 Bottom Stands with wheels
- 2 Sliding brackets for paper take up
- 1 Hex Wrench (M5)Φ4
- 28 Socket flat head screws(M6*12L)
- 1 Installation Guide

Step 2

Position the Left side vertical stand perpendicularly to part ❶ and put the screws into the holes and tighten them to form a left side T-stand (Figure 2-1). Repeat the same steps with the Right side vertical stand.

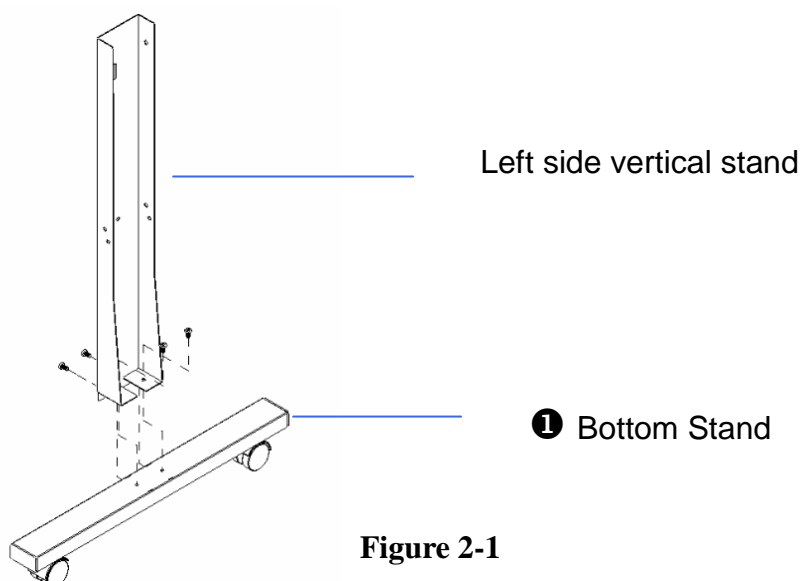


Figure 2-1

Step 3

Place the stand beam upright on the T-stand and put the screws into the holes but do not tighten them at this step.

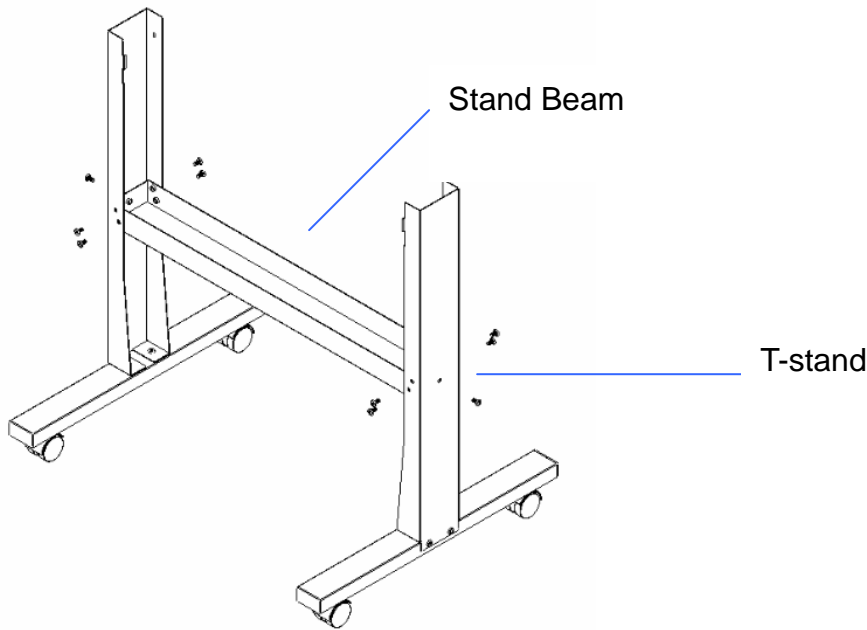


Figure 2-2

Step 4

Position both the left Support and right Support perpendicularly to the T-stand and put the screws into the holes and tighten them as shown in Figure 2-3.

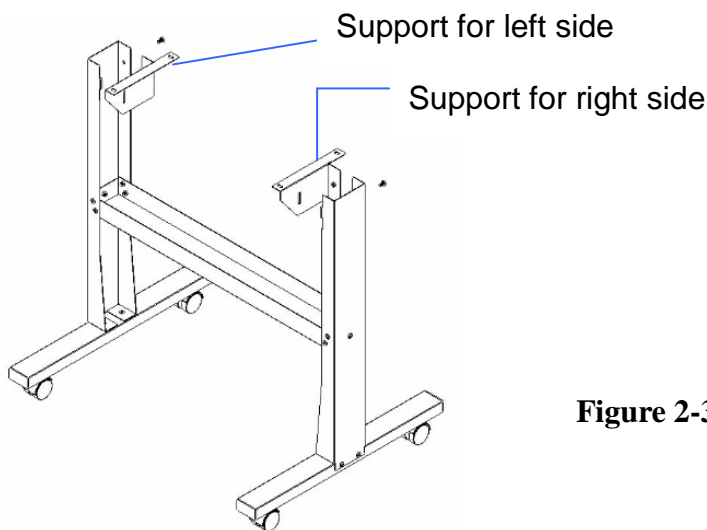
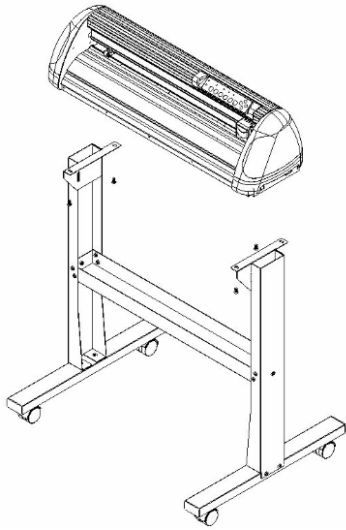


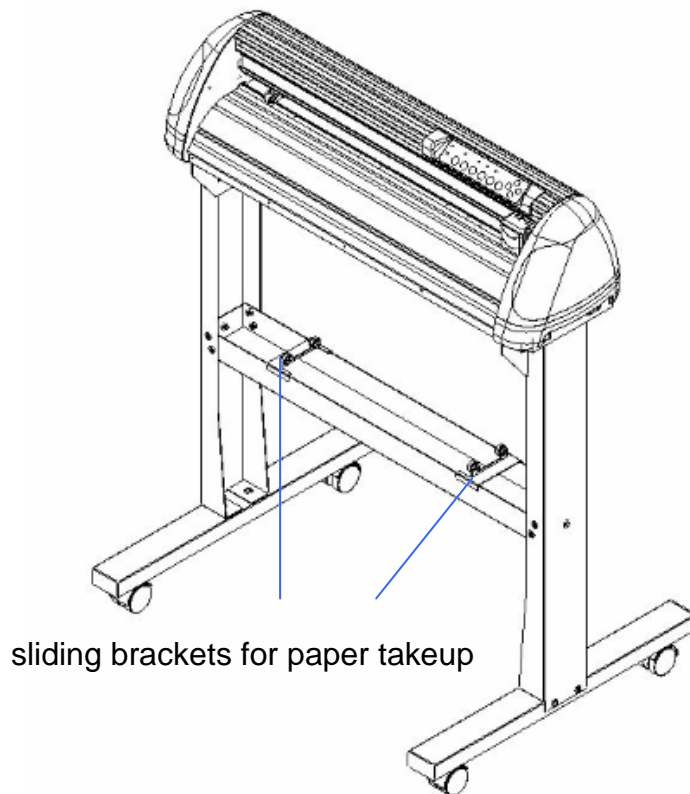
Figure 2-3

Step 5

Remove the cutting plotter from the carton. Position the stand under the plotter, and insert the screws into the holes on the bottom of the plotter but do not tighten them up as shown in Figure 2-4.

**Figure 2-4****Step 6**

Tighten the screws of step 3 and step 5. Place the sliding brackets for paper takeup onto the stand beam.

**Figure 2-5**

2.3 Blade Installation

Figure 2-6 is the illustration of the blade holder. Insert a blade into the bottom of the blade holder and remove the blade by pushing the pin. Make sure that your fingers are away from the blade tip.

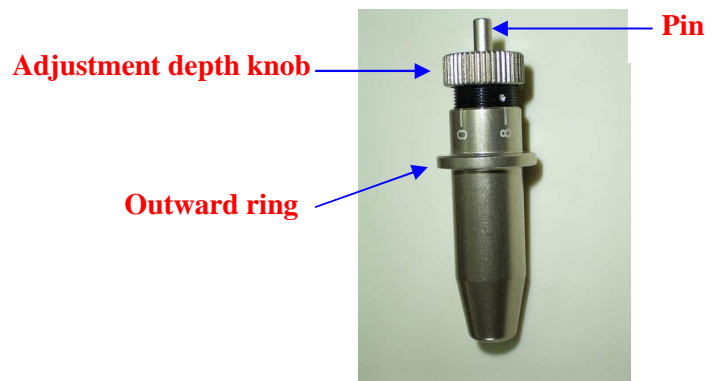


Figure 2-6

Step 1

Install blade (Figure 2-7).



Figure 2-7

Step 2

Push the blade to the bottom of the blade holder (Figure 2-8).



Figure 2-8

Step 3

Adjust the blade tip to suitable length by screwing "Blade tip adjustment screw" clockwise or count-clockwise. (Figure 2-9).



Figure 2-9

Tips:

"The proper length" means the blade's length is adjusted 0.1mm more than film's thickness. That is, if the thickness of film is 0.5mm, then blade's length is properly adjusted 0.6mm and it can completely cut through the film layer yet avoid penetrating the backing.

Step 4

Insert the blade holder into tool carriage. Please note the outward ring of the holder must put into the grooves of carriage firmly (see Figure 2-10), fasten the case (Figure 2-11).

**Figure 2-10****Figure 2-11****Step 5**

Use the reversing steps to remove the blade holder

Step 6

Eject the blade: Push “Blade eject pin” to eject blade when the blade needs to be replaced.

Caution

The blade will lose its sharpness after a period of usage, the cutting quality be affected. By increasing the cutting force, it might do the trick. However, the blade is worn out and no longer provides a reliable cutting, you should replace a new one. The blade is consumable and must be replaced as often as necessary to maintain the cutting quality. The quality of the blade deeply affects the cutting quality. So be sure to use a high quality blade to ensure good cutting results.

Tips - When to replace a new blade:

- ✓ If the blade is broken, you have to replace a new one.
- ✓ If cutting quality is not as good as usual, you may need to replace a new one.
- ✓ If the material cannot be cut through by higher cutting force, you may need to replace a new one.

2.4 Media Loading

2.4.1 Loading the Sheet Media

To load the media properly, please follow the below procedures:

Step 1

Lift the 2 levers at the back side of cutter to raise pinch rollers (Figure 2-12).

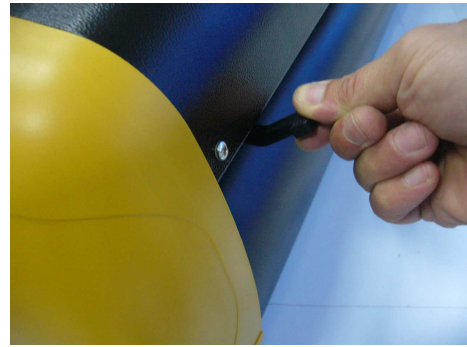


Figure 2-12

Step 2

Load your media on the platen and slide it under the pinch rollers from either the front side or the backside. The **alignment rulers** on the platen extension will help you to adjust the media precisely (Figure 2-13).



Figure 2-13

Step 3

Then move the pinch rollers manually to the proper position. Be sure the pinch rollers must be positioned above the grid drum. The **white marks** on the main beam will remind you where the grid drums are (Figure 2-14).



White mark

Figure 2-14

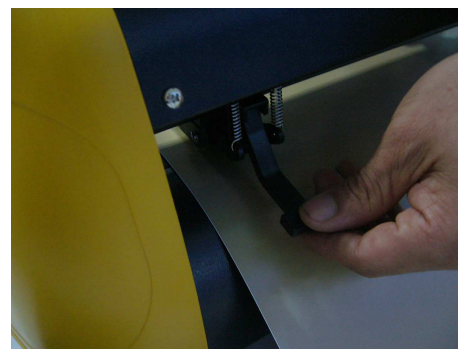
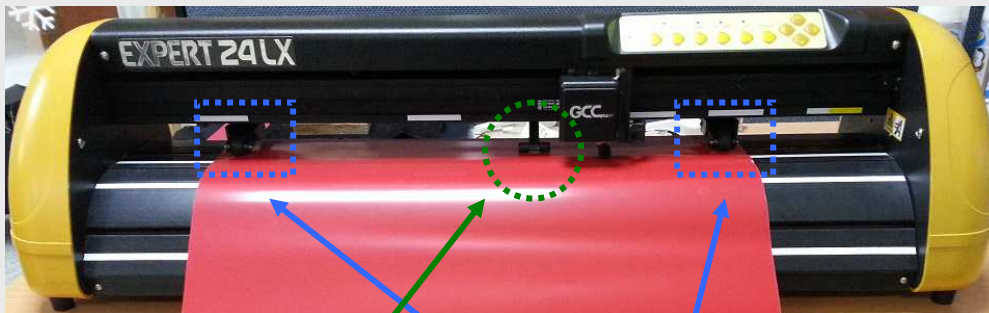


Figure 2-15

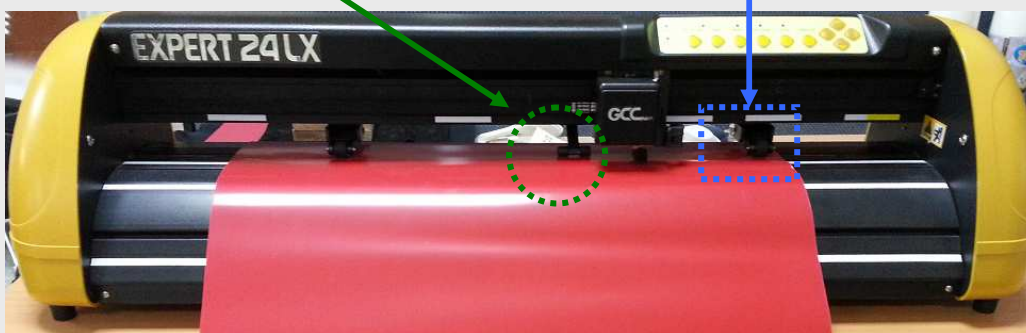
CAUTION!!

- ✓ Make sure the Primary and secondary pinch rollers are set to right positions.
- ✓ Position the Primary Pinch Rollers at the right and left sides of media.
- ✓ Position the Secondary Pinch Roller at the center of media.

(O)**Correct****Figure 2-17****(X)****Incorrect**

Secondary Pinch Roller

Primary Pinch Roller

**Figure 2-18****Step 4**

Push the lever backward to lower down the pinch rollers (Figure 2-15).

Step 5

After turn on the power, the tool carriage will measure the size of the media automatically. And the plotting cutter begins to work.

Note:

- ✓ Always adjust the position with the pinch rollers raised.
- ✓ Please reposition the pinch roller by holding the center of the pinch roller and moving it from the rear end of the machine. (Figure 2-19)
- ✓ DO NOT move the pinch roller by holding its front rubber roller (Figure 2-20).

**Figure 2-19****Correct****Figure 2-20****Incorrect**

2.4.2 Loading the Roll Media

You can use the stand with flexible media support system. Please refer to Chapter 2.2 for hardware setup, and Chapter 2.5.1 for media loading.

2.4.3 How to change the poll size without turning off the machine?

Have the machine on-line, press origin set once and the red error light will start blinking, then pressed again and the machine will start moving to get the new size. Then open the VLCD and under the poll size you will find the new measurements.

2.5 Cable Connection

The cutting plotter communicates with a computer through a **USB (Universal Serial Bus)** or a **Serial port (RS-232C)**. This chapter shows you how to connect the cutting plotter to a host computer and how to set up the computer/cutting plotter interconnection.

!! Notice: When USB connection is enabled, serial port will be disabled automatically.

2.5.1 USB Interface

Expert 24 build-in USB interface are based on the Universal Serial Bus Specifications Revision 1.1. (Operation system of Windows 95, Windows NT don't support USB).

- USB driver installation

Caution!!

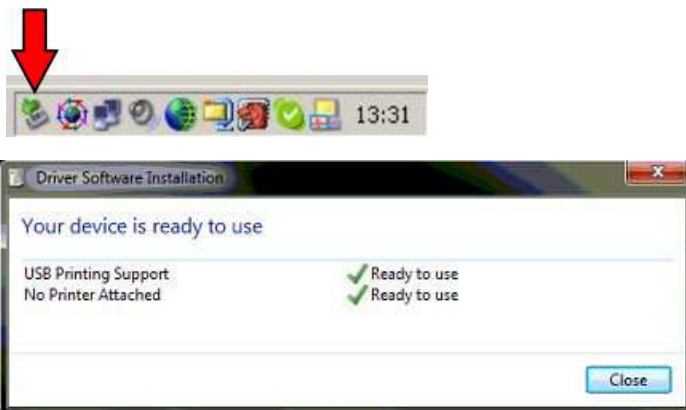
- ✓ **If you are using Windows 8/ 7/ Vista/ XP/ 2000 as your operating system, make sure you log in using the “Administrator” account.**

Use the USB One-click Installation for quick driver installation. Follow the simple steps below for driver setup.

Step 1:

Connecting your GCC cutter

1. Turn on the machine.
2. Connect the USB connector to the machine and then USB driver will installed automatically. It will take a few minutes to find the device. Please DO NOT disconnect the USB cable until the installation has completed.
3. You can double click the USB icon on the taskbar to make sure the USB device is detected.

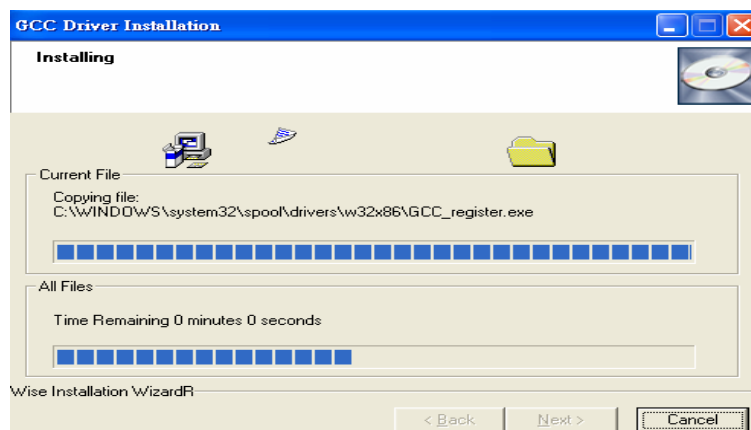
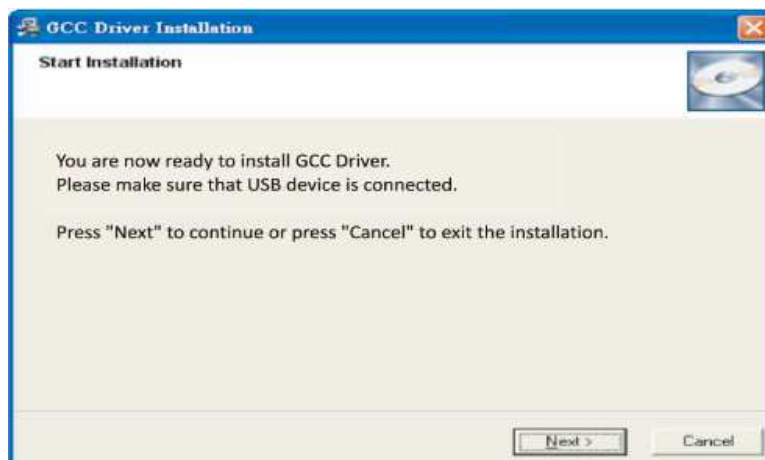


Step 2: Installing the software

- (1) Put the installation CD into your CD-ROM. **Please make sure that the USB device is connected before you start the driver installation.**
- (2) Choose the model you want to install from the driver list and click on Win 8/ 7/ Vista/ XP Driver (Manual Selection) or Win 8/ 7/ Vista/ XP Driver (Automatic detection) to start installing the Driver and AAS plugin. (The Expert Pro model is used as an illustration in the following steps.)



- (3) Click "Next" to start the driver installation.



- (4) The installation will take a few minutes to complete and you will see a message below and click on “OK” upon completion. Enjoy your GCC cutter!



Note:

- (1) If the driver is being installed for a second time, the user will be prompted as to whether a second copy of the driver installation is required.



- (2) If the user selects yes, a second copy of the driver will be installed.



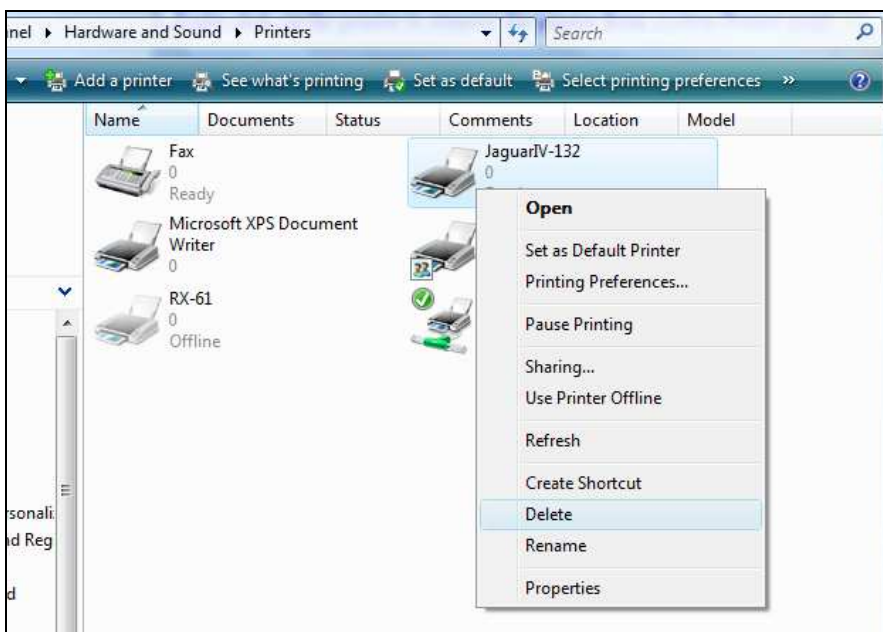
For users who have upgraded Adobe Illustrator or CorelDRAW, please go to the AAS Installer page in the Properties window and click Install to access the latest version of GCC AAS Plugin.

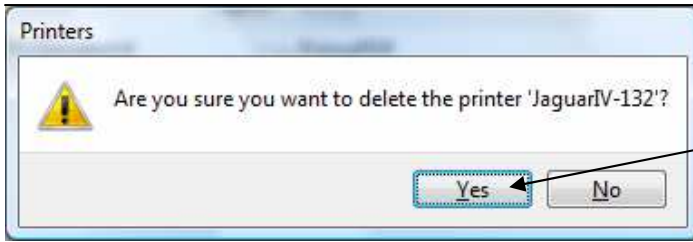


2.5.2 Driver Un-installation

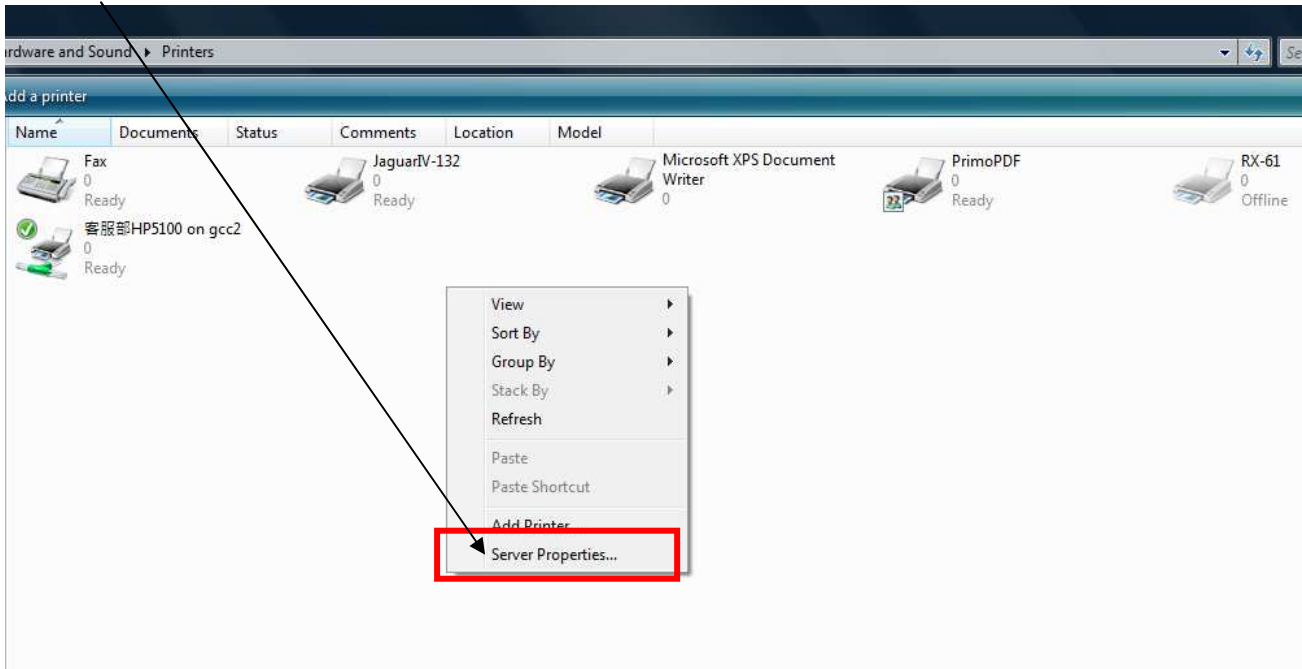
You have to remove previous version driver installed on your PC system completely before you can install the latest version successfully. Please refer to below steps.

1. Right click on the printer to remove the printer from system Printer page.

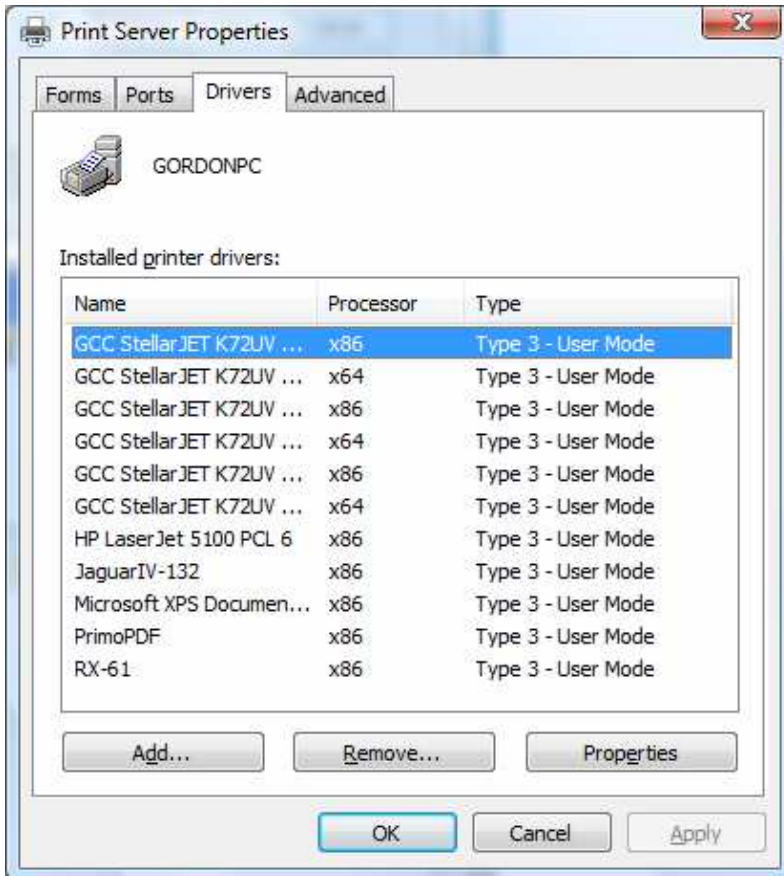
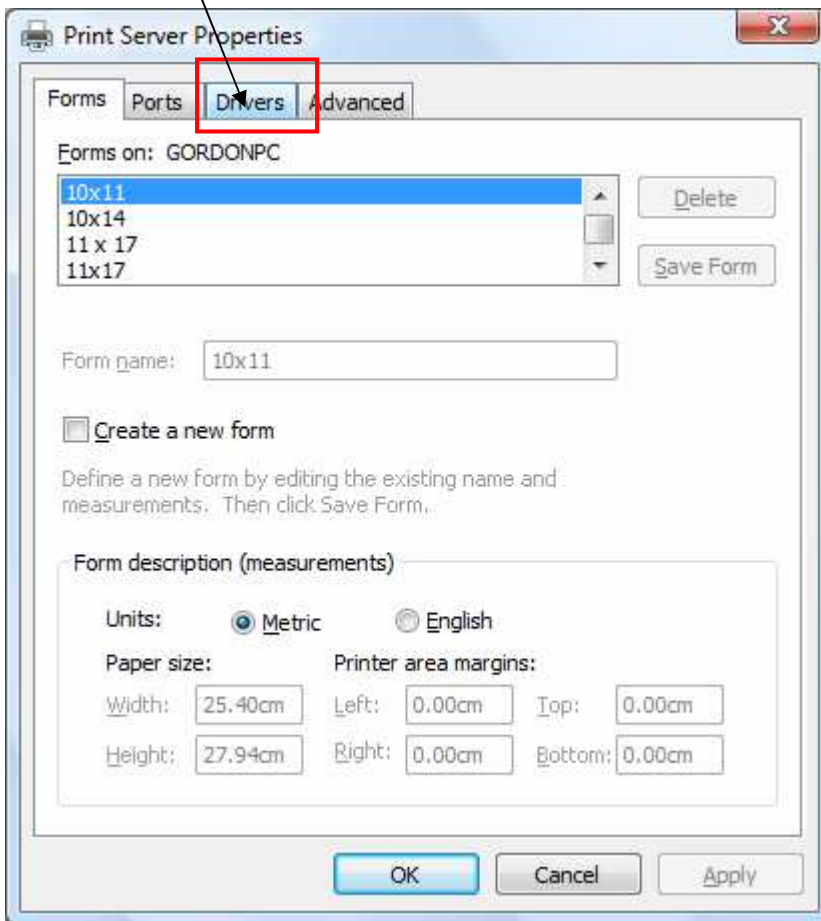




2. After removing the unit, right click on any empty space on the page and select “Server Property”



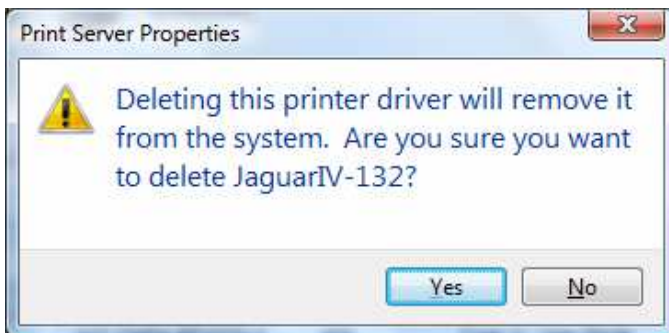
3. Select “Driver” page



Select the model and click on “Remove”.



Click on "OK"



Click on "Yes"

The driver installed on PC is completely removed.

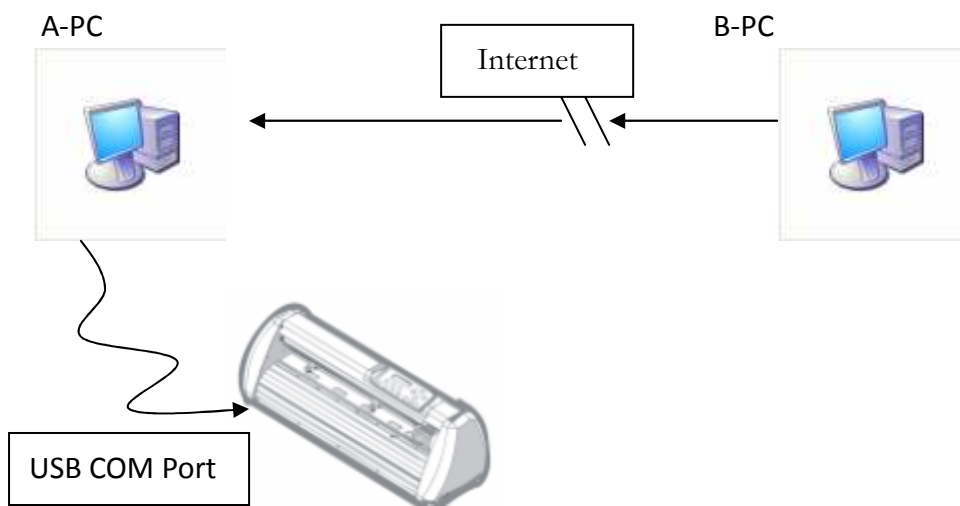
2.5.3 RS-232 Interface

■ Connecting to the RS-232 (Serial) Port

For IBM PC, PS/2 users or compatibles, connect the RS-232C cable to the serial connector of the assigned serial port (COM1 or COM2) of your host computer.

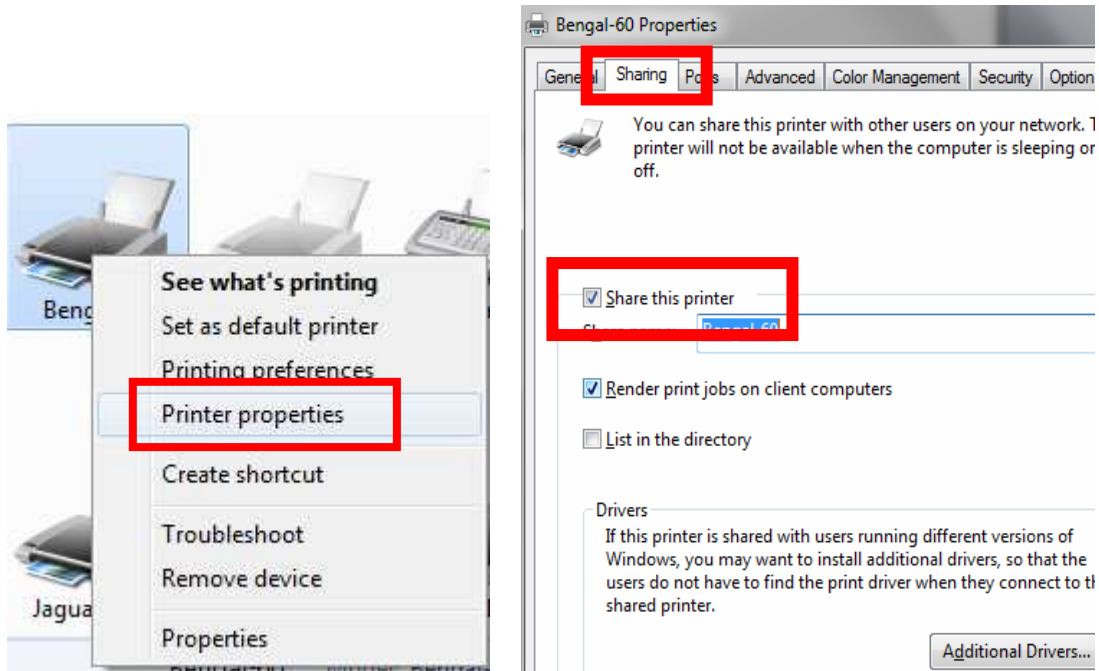
2.5.4 Printer Sever Shared Setting

In "A-PC", set the printer driver as a shared printer, then use B-PC to connect A-PC's printer driver via internet.

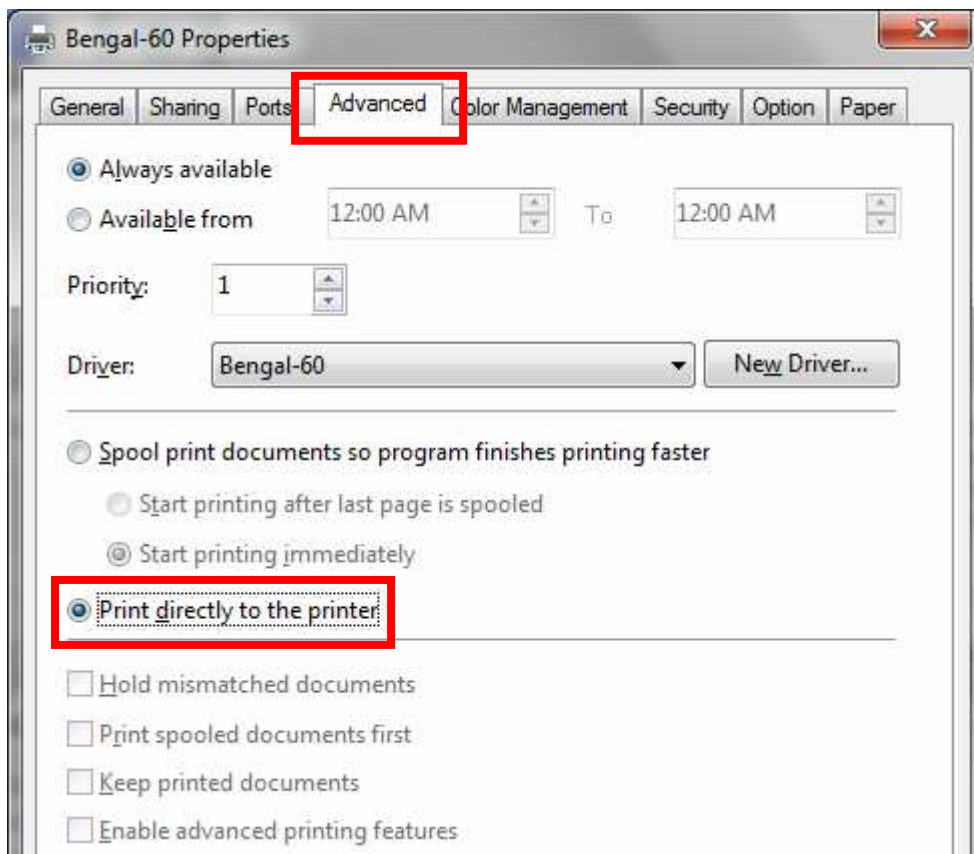


Step 1.

Please set A-PC's printer driver to shared printer. (Right-click on printer icon, choose "Printer properties". Click "Sharing" tab then check "Share this printer")

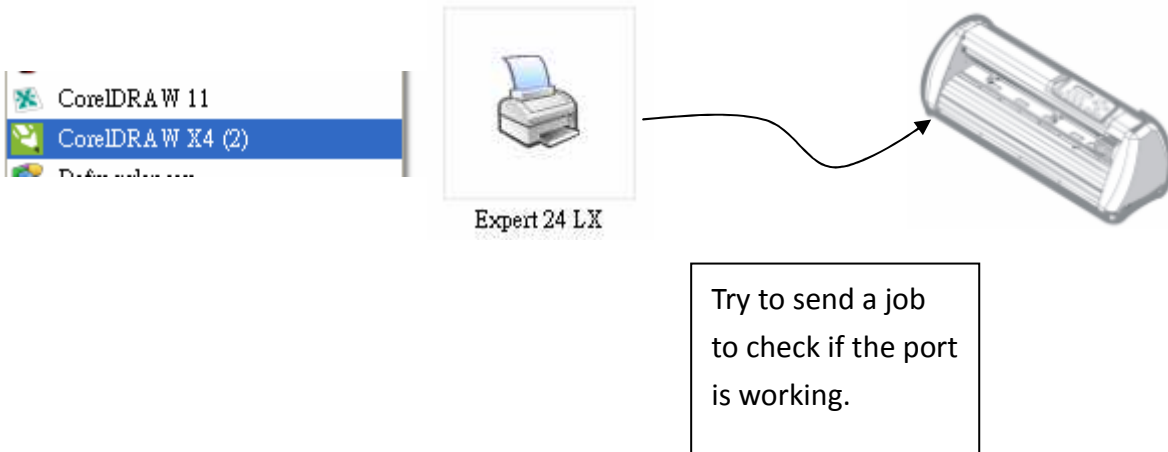
**Step 2.**

Click "Advanced" tab, then choose "Print directly to the printer" option.



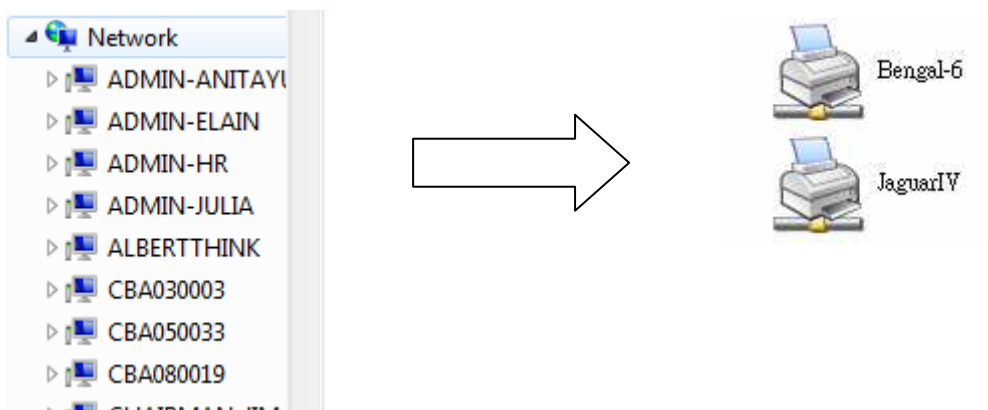
Step 3.

Send a job to the machine to check if A-PC is connected to the machine.



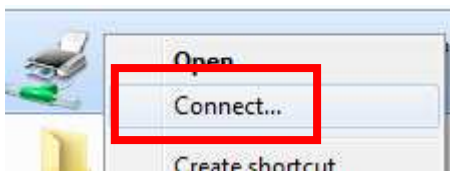
Step 4.

Activate A-PC's Printer Driver from B-PC's Network.



Step 5.

Right-click on printer icon, and select "Connect" to connect A-PC's printer.



3. Operation

3.1 The Control Panel

3.1.1 The Outline of control panel

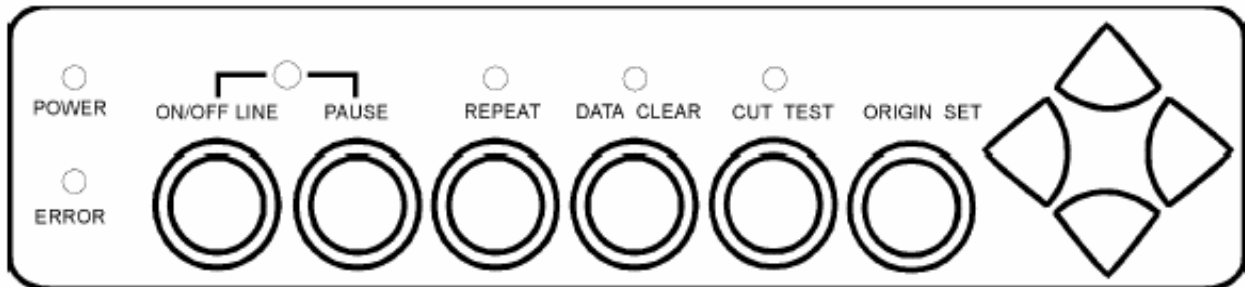


Figure 3-1

Key	Function
POWER LED	Indicates the power status (LED ON: power on; LED OFF: power off)
ERROR LED	Indicates the error status (LED ON: error; LED OFF: normal)
ON/OFF LINE	Switches modes or stops cutting job (LED ON: on-line; LED OFF: off-line) While in on-line mode: only ON/OFF LINE and PAUSE keys activated While in off-line mode: the settings in VLCD can be adjusted.
PAUSE	Temporarily halts the cutting process or resumes a paused job
REPEAT	Repeats last job.
DATA CLEAR	Clears up buffer memory.
CUT TEST	Perform cutting tests on different media.
ORIGIN SET	Resets origin at a new position.
4 Arrow Keys	Moves carriage position, selects function, or changes setting.

3.1.2 Reset Origin

Note:

- ✓ Make sure the machine is in off-line mode to enable this function.

Step 1 Move the carriage to a new position.

Step 2 Press the ORIGIN SET button to reset origin.

3.1.3 Cut Test

Note:

- ✓ Make sure the machine is in off-line mode to enable this function.
- ✓ It's recommended to run this function until the cutting quality meets your demand before executing the cutting job.

Step 1 After sizing, press the ON/OFF LINE button to set as off-line mode.

Step 2 Move the carriage to a preferred position.

Step 3 Press CUT TEST button to begin.

3.1.4 Repeat

Note:

- ✓ Make sure the machine is in off-line mode to enable this function.

Step 1 Press the ON/OFF LINE button to set as off-line mode.

Step 2 Press the REPEAT button to repeat the cutting function starting at the position where the carriage is located. Otherwise, the carriage can be moved to a preferred position, and after re-setting the position as the new origin, user can use the repeat function to repeat a job.

3.2 VLCD

“VLCD” is a program for modifying parameters of cutting functions.

3.2.1 Installation

Step 1 Copy the VLCD.exe file in the Accessories folder of the Sable Installation CD onto your local drive.

Step 2 Launch VLCD by double-click on the icon.

Note:

- ✓ Make sure the machine is in on-line mode to enable this program.
- ✓ The media is loaded on the machine.

Step 3 Choose the correct port setting that is used for connecting the cutter to your computer (Figure 3-2).

If you are using the USB cable, choose **USB0** from the pull down menu. If you are using a Serial cable, choose either **COM1** or **COM2**. Make sure no other devices are occupying the port that you are going to use.

Step 4 Press the **Connect** button to connect your computer and the cutter.

If the connection succeeds, the model info, firmware version, and adjustable parameter columns will be shown (Figure 3-3).

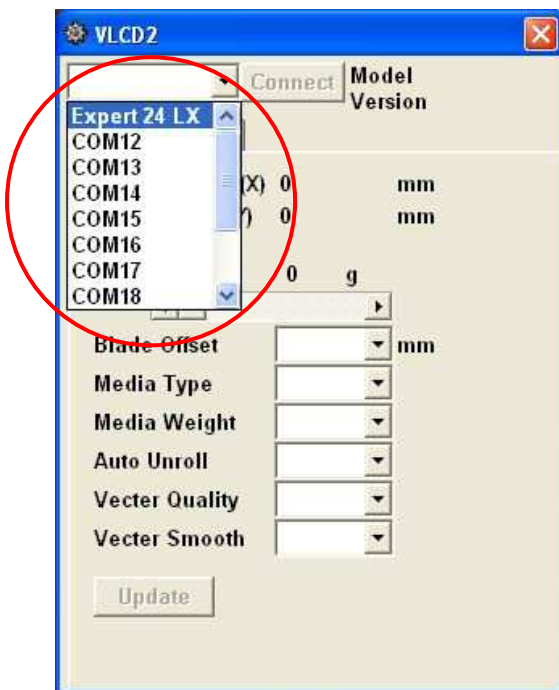


Figure 3-2

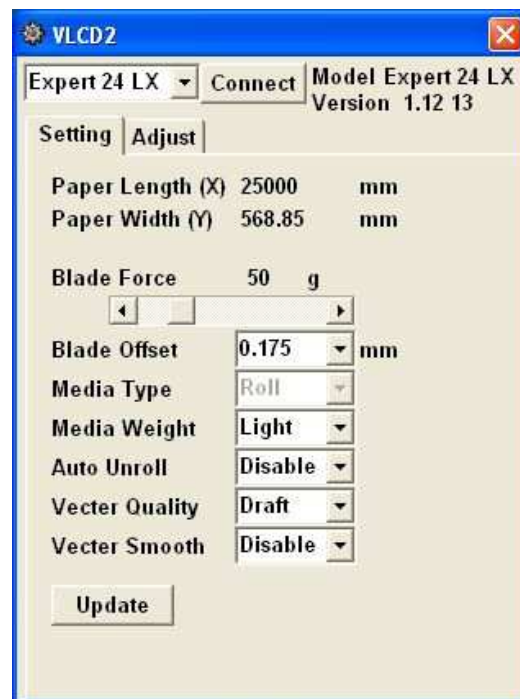


Figure 3-3

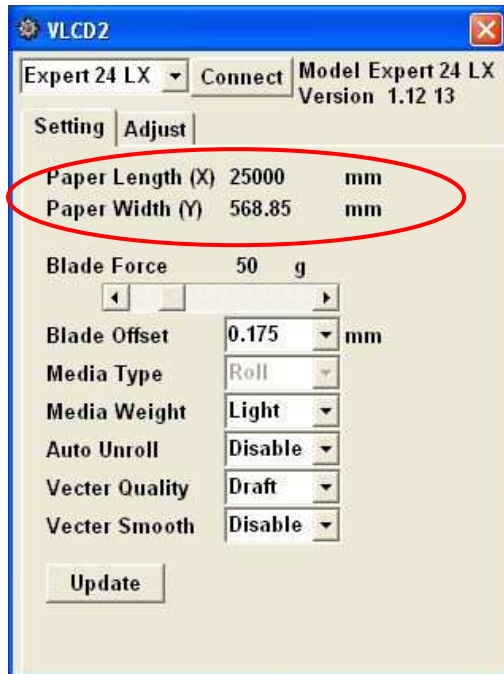
3.2.2 Functions of VLCD

Below are the functions adjustable through the VLCD for Sable.

- Poll Size
- Force
- Media Weight
- Offset
- Auto Unroll
- Update Setting
- Vector Smooth

■ **Poll Size**

Click on the **Poll Size** button to reveal the X/Y values.



Paper length represents the maximum plotting length. Paper Width represents the distance between the farthest two pinch rollers. (Figure 3-4).

Figure 3-4

■ **Force**

Adjusts the blade force between 0 and 250 (Default = 50).

■ **Media Weight**

Allows user to select the media weight. There are 2 options: Heavy, and Light (Default).

■ **Offset**

Adjusts the blade offset to ensure cutting quality. There are 8 options: 0.000, 0.175 (Default), 0.250, 0.275, 0.300, 0.500, 0.750, and 1.000.

■ **Auto Unroll**

Allows user to specify whether the cutter is used in single sheet mode (Auto Unroll Off: Default) or in roll media mode (Auto Unroll On).

■ **Update Setting**

Applies the changed setting onto the cutter by press the **Update Setting** button.

■ **Vector Smooth**

Renders a smoother curve when outputting arcs. (Default: Disable)

3.2.3

Restore factory default settings

VLCD allows you to turn all parameters to factory-default settings.

Step 1 Enter the USB-port switching mode by pressing “Pause”(2) after “On/Off line”(1) and then press “Origin Set” (3).



Step 2 Press the left key (4) and then up (5)



Step 3 You have now entered the Data clear and restoring default settings mode; press “Data clear” (6) and then “Origin Set” (7) to confirm.



Step 4 The default settings restoring process has been completed. All buttons will be ineffective before the cutter is rebooted.



Step 5 Restart your cutting plotter now.

3.3 File Uploader

3.3.1 Installation

- ✓ “File Uploader” is a tool to help loading files for direct output.
- ✓ The program **ONLY** supports HPGL format-files generated via GCC Cutter driver.
- ✓ Copy the GCC File Uploader.exe file in the Accessories folder of the Sable’s Installation CD onto your local drive to finish installation.
- ✓ Launch GCC File Uploader by double-click on the icon (Figure 3-5).

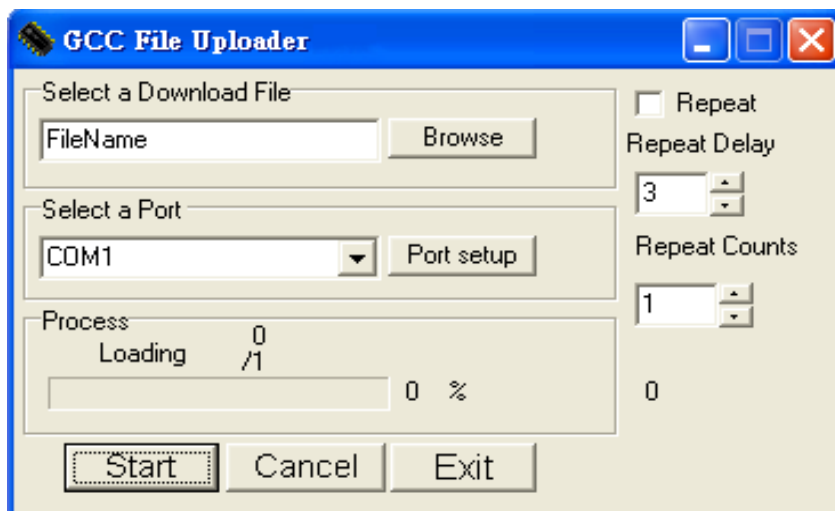


Figure 3-5

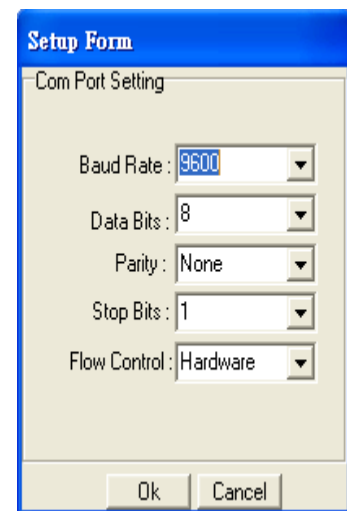


Figure 3-6

3.3.2 Functions of File Uploader

- **Port setup**
 - ✓ This function will be activated while choosing COM port for data transmission.
 - ✓ Press the Port setup button to pop up the setup window for parameter change (Figure 3-6).
- **Repeat**
 - ✓ Activate this function by click on the Repeat’s checkbox.
 - ✓ Repeat Delay – the pause time between jobs; Unit: second.
 - ✓ Repeat Counts – the number of repeat jobs.

3.4 Data Transmission

There are two options to transmit the data from the computer to the cutting plotter:

Option 1: With proper interface settings, the data can be transmitted from your application software package to the cutting plotters directly.

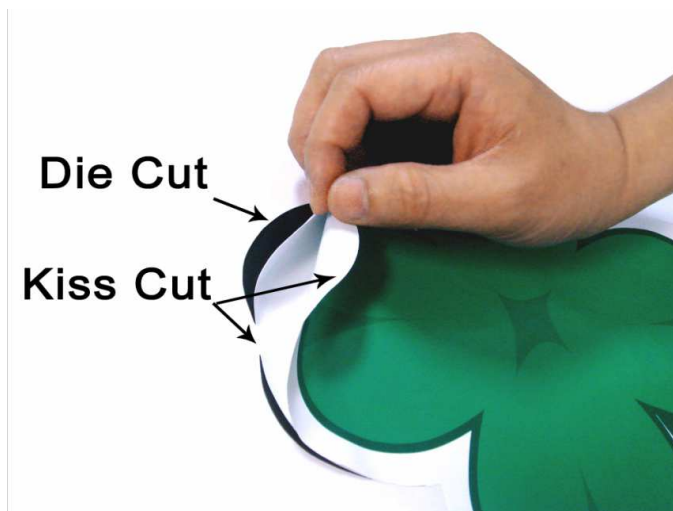
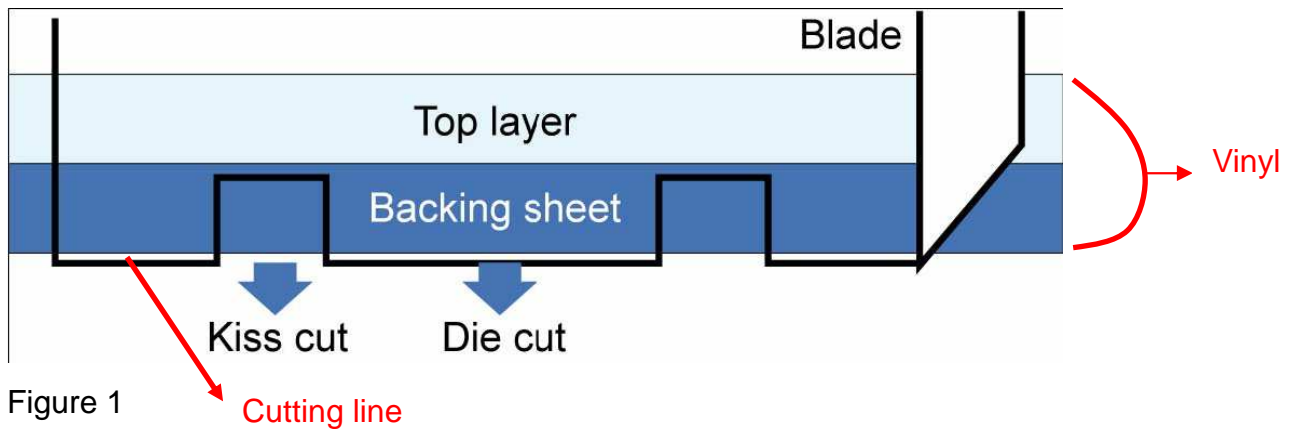
Option 2: Most cutting software packages are able to emulate **HP-GL** or **HP-GL/2** commands, therefore. As long as the file is **HP-GL** or **HP-GL/2** format, the cutting plotter can output the data precisely.

3.5 Expert 24 Print Driver setting

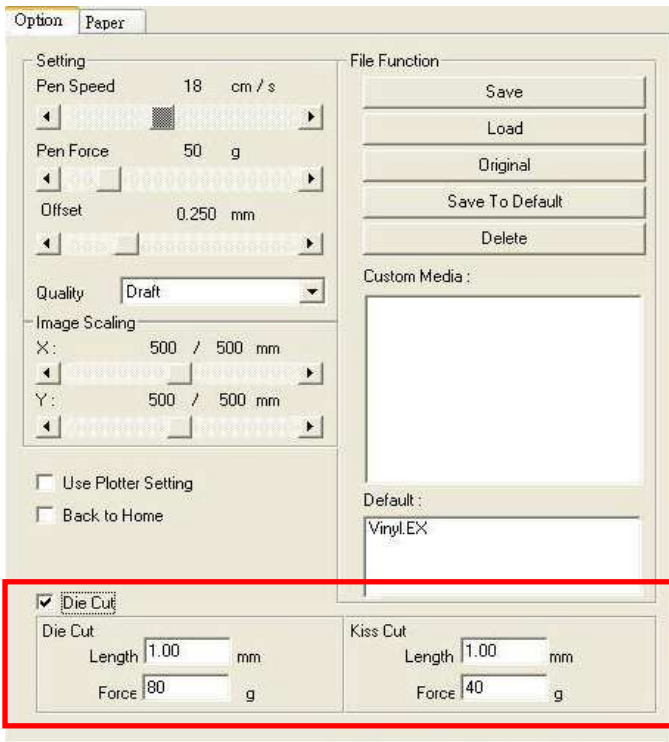
3.5.1 Expert 24 Print Driver setting>Option Page

Die Cut

The Die Cut function must be activated with the Kiss Cut function to avoid the falling of cut-through materials and material jam beneath the carriage. Die Cut helps you to cut through the backing of the material while Kiss Cut cuts through only the top layer but not the backing. This will leave only tiny bits of the backing attached to the top layer, creating complete individual patterns with backing sheets (see figure 1 and 2).



To activate the Die Cut function, go to “Option”, tick “Die Cut”, and enter the amount you wish for the “Length” and “Force” of both Die Cut and Kiss Cut, then click “OK” (see figure 2).

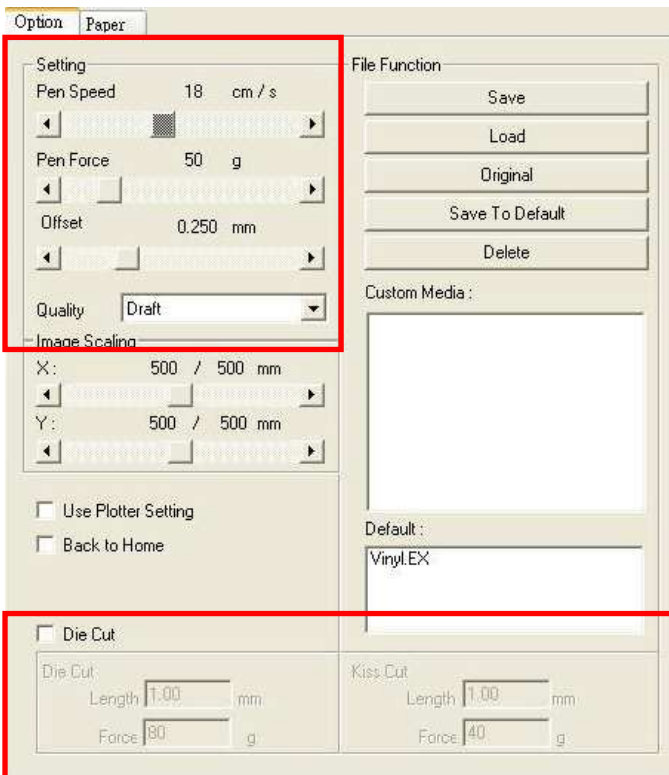


*Note:

The length setting for the cutting line of Die Cut is in the range of 0-2000mm whereas that of Kiss Cut is 0-100mm.

Figure 3

When the job is completed and you untick the Die Cut function, you will be able to adjust the pen speed, pen force, and offset in the section on the top following normal operating procedures (see figure 3).



Note:

1. The extension of the blade has to be set to cut through both the top layer and the backing in the very beginning. You then adjust the tool force for the best cutting performance.
2. Once the Die Cut function is activated, it will perform on all the line segments on the object.

Figure 4

3.6 Reference Parameter setting for different materials

The following reference parameter is used on GCC verified materials shown in the table.

Material	Wall stickers	Magnets	Protective tint	
Blade	red	green	green	
Blade tip length (mm)	0.3	0.8	0.3	
Force (g)	95	580	320	
Speed (cm/sec)	72	3	3	
Offset (mm)	0.275	0.5	0.5	
Recommend model	RX, Jaguar	RX, Jaguar	RX, Jaguar, Puma, Bengal, Sable, Ex Pro, Ex 24/52, Ex 24/52 LX	
Material	Vehicle stickers	Reflective film	Cardboard	
Blade	red	green	green	
Blade tip length (mm)	0.27	0.5	0.3	
Force (g)	85	380	165	
Speed (cm/sec)	60	3	30	
Offset (mm)	0.275	0.5	0.5	
Recommend model	RX, Jaguar, Puma, Bengal, Sable, Ex Pro, Ex 24/52, Ex 24/52 LX	RX, Jaguar, Puma, Bengal, Sable, Ex Pro, Ex 24/52, Ex 24/52 LX	RX, Jaguar, Puma, Bengal, Sable, Ex Pro, Ex 24/52, Ex 24/52 LX	
Material	Window tint	Window decoration	Personalized stickers	Rhinestone
Blade	red	red	red	green
Blade tip length (mm)	0.09	0.25	0.28	0.8
Force (g)	70	95	105	190
Speed (cm/sec)	72	65	72	15
Offset (mm)	0.275	0.275	0.275	0.5
Recommend model	RX, Jaguar	RX, Jaguar	RX, Jaguar	RX, Jaguar IV, Puma III

4. Basic Maintenance

This chapter explains the basic maintenance (i.e. cleaning the cutting plotter) required for the cutting plotter. Except 24 for the steps mentioned below, all the other maintenances must be performed by a qualified service technician.

4.1 Cleaning the cutting plotter

In order to keep the cutting plotter under good conditions and have the best performance, you need to clean the machine properly and regularly.

Precaution in Cleaning



- ✧ Unplug the cutting plotter before cleaning.
- ✧ Never use **solvents, abrasive cleaners or strong detergents** for cleaning. They may damage the surface of the cutting plotter and the moving parts.

Recommended Methods

- ❖ Gently wipe the cutting plotter surface with a lint-free cloth. If necessary, clean it with a water-rinsed or an alcohol-rinsed cloth. Wipe the cutting plotter to remove any residues on the cutting plotter. Finally absorb water with a soft, lint-free cloth.
- ❖ Wipe all the dust and dirt from the tool carriage rail.
- ❖ Use a vacuum cleaner to clean any accumulated dirt and media residue beneath the pinch roller housing.
- ❖ Clean the platen, paper sensors and the pinch rollers with a water-rinsed cloth or alcohol-rinsed cloth. Finally absorb water with a soft, lint-free cloth.
- ❖ Use the same method mentioned above to clean dust and dirt from the stand.

4.2 Cleaning the Grid Drum

- ❖ Turn off the cutting plotter, and move the tool carriage away from the area needed to be cleaned.
- ❖ Raise the pinch rollers and move them away from the grid drum for cleaning.
- ❖ Use a bristle (a toothbrush is also acceptable) to remove dust from the drum surface. It needs to rotate the drum manually to clean the drum completely (Figure 4-1).

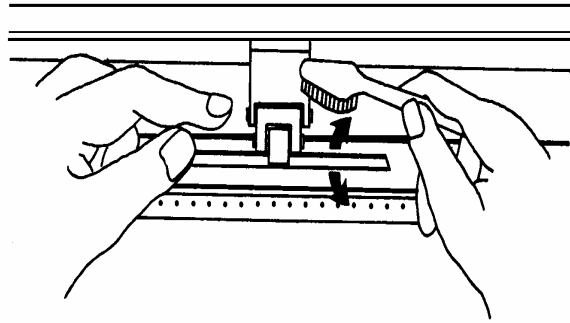


Figure 4-1

4.3 Cleaning the Pinch Rollers

If the pinch rollers need a thorough cleaning, use a lint-free cloth or cotton swab to wipe away the accumulated dust from the rubber portion of the pinch rollers. To prevent the pinch rollers from rotating while cleaning, use your fingers to hold the pinch rollers in place.

Use a lint-free cloth or cotton swab rinsed with alcohol to remove the embedded or persistent dust.

5. Trouble Shooting

This chapter helps you to correct some common problems you may come across. Prior to getting into the details of this chapter, please be sure that your application environment is compatible with the cutting plotter.

Note:

Before contacting your local dealer, please make sure that the problems are coming from your cutting plotter, not from the communication between the computer and cutting plotter or from a malfunction in your computer or software.



Why doesn't the cutting plotter operate?

5.1 What if Expert 24 cannot operate?

If your cutting plotter doesn't plot, please check the following items first:

- Is the power cord plugged in properly?
- Is the power cord connected to the power connector properly?
- Is the power switch turned on properly?

Solutions: If the POWER LED lights on, the cutting plotter should be in a normal condition.

Turn off the cutting plotter and turn it on again to see if the problem still exists.

If the POWER LED doesn't light, please call your local dealer to resolve this problem.





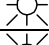

5.2 Light Indicators

Some of the operating problems can be identified by the lights on the control panel.

When your cutting plotter stops operating or the lights are on or flashing unexpectedly, see the following descriptions of the panel light patterns and the actions you should take.

5.2.1 Warning Indicators

When the ERROR LED flashes (as shown below), take the necessary actions according to the following instructions. When the problems are solved, the ERROR LED will turn off automatically. Pressing the ON/OFF LINE button can also turn off the ERROR LED.

Warning Indicators		ERROR	ON/OFF LINE	REPEAT	DATA CLEAR	CUT TEST
1	Graph was clipped		●	●	○	○
2	HPGL/2 command Error		●	○	●	○
3	Lever up or no media		●	○	○	○
4	Cannot repeat		○	●	○	○
5	Communication error		○	○	●	○
6	Width sensor error		○	○	○	●
7	Check media, drum or X motor	●	○	○	●	○



= flash



= on



= off

Warning 1 The graph is clipped

This condition indicates that the cutting graph is bigger than the cutting area.

You can solve the problem by:

1. Reload a wider or longer media.
2. Move the pinch rollers to widen the cutting area.
3. Re-scale the graph to a smaller size. Then send the cutting job again from your computer to the cutting plotter.

Warning 2 HPGL/2 command error

If the cutting plotter cannot recognize the commands from your computer, please check the commands applied to your cutting plotter in the HP-GL/2 or HPGL commands. Then send the same job to the cutting plotter again.

If that doesn't solve the problem, please contact your local dealer.

Warning 3 Lever up or no media

Check that you have lowered the lever down and make sure that you load the media before cutting.

Warning 4 Cannot repeat cutting

There are two possibilities:

1. There is no data in the buffer: please send the job again from your computer;
2. The buffer is full: please send the same job from your computer again.

Under both conditions, press the ON/OFF LINE key to clear the warning message.

Warning 5 Communication error

Check that the serial/USB cable has been connected to the cutting plotter and computer properly.

If so, then check whether the interface settings are correct. Check that the communication settings in your PC are the same as the ones on your cutting plotter (for example – 9600bps, no parity, 8 bits, 1 stop bit). Then, press ON/OFF Line key to switch back to On Line mode.

Warning 6 Width sensor error

Check that the pinch rollers are positioned above the grid drum and reload the media again.

Note:

In order to identify the warning messages easily, please stick the warning sticker (in accessory box) on the side cover of your cutting plotter.

5.2.2 Error Indicators

If some mechanical problems occur during the operation, the ERROR LED will turn on. Please follow the instructions below to solve the problem. If the cutting plotter still cannot work, please contact your local dealer and tell him or her about the error indicator.

	Error Indicators	ERROR	ON/OFF LINE	REPEAT	DATA CLEAR	CUT TEST
1	SRAM error	●	●	○	○	○
2	DRAM error	●	○	●	○	○
3	Check media, drum, or X motor	●	○	○	●	○
4	Check media or Y motor	●	○	○	○	●



= flash



= on



= off

Error 1 and 2

Please contact your local dealer to replace SRAM or DRAM.

Error 3 Check the media, drum or X-motor (Drum driven motor)

This message indicates that there might be a problem on the **X-axis**.

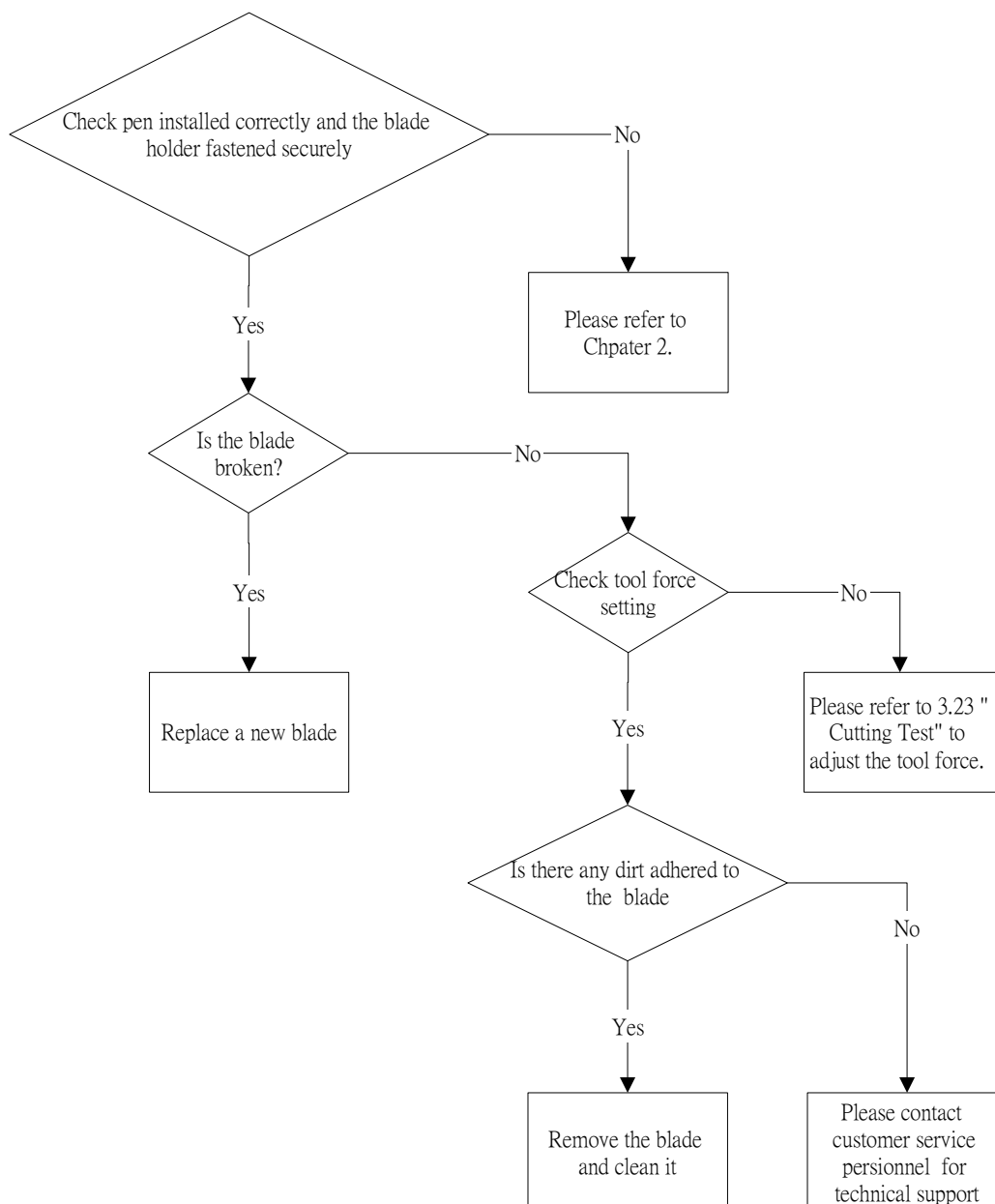
Please check that the drums are working normally and see that the media is well loaded. Then turn on the power and reboot the cutting plotter.

Error 4 Check the media, or Y motor (carriage driven motor)

This message indicates that there might be an obstruction to the carriage relating to a problem on the **Y-axis**.

Please clear the obstruction and check that the carriage can move smoothly. Then turn on the power and reboot the cutting plotter.

5.3 Cutting Quality Problems

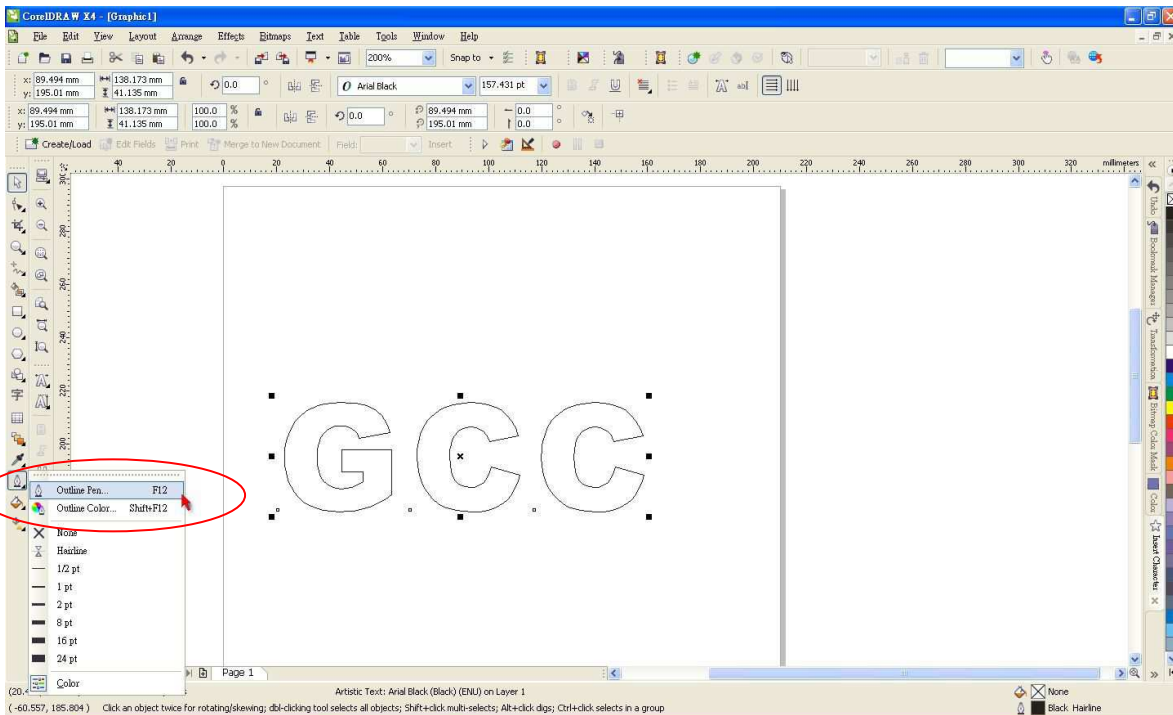


CoreIDRAW Output Instruction

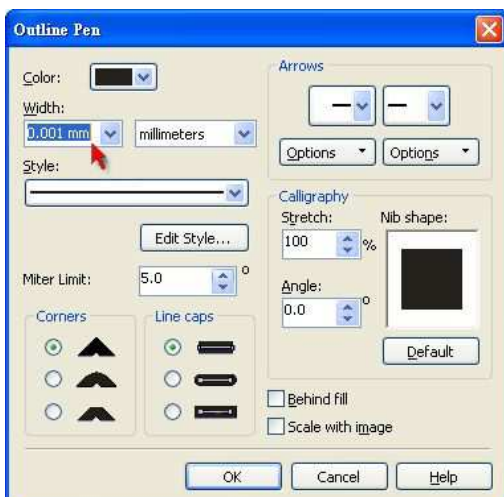
The following is an example of how to output the file with CoreIDRAW.

User Instructions

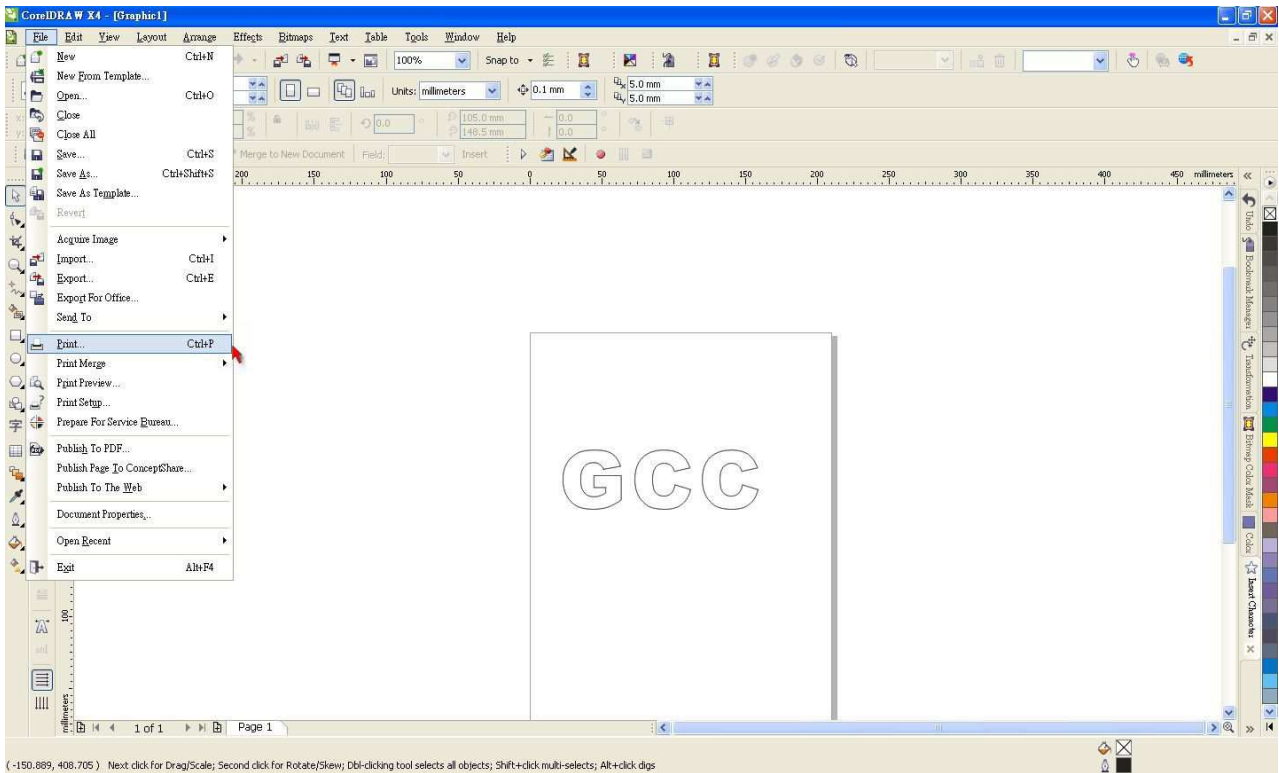
1. Open CoreIDRAW, finish editing all the files you wish to plot and select all the images at once.
2. Select “Outline Pen” to adjust the outline for cutting.



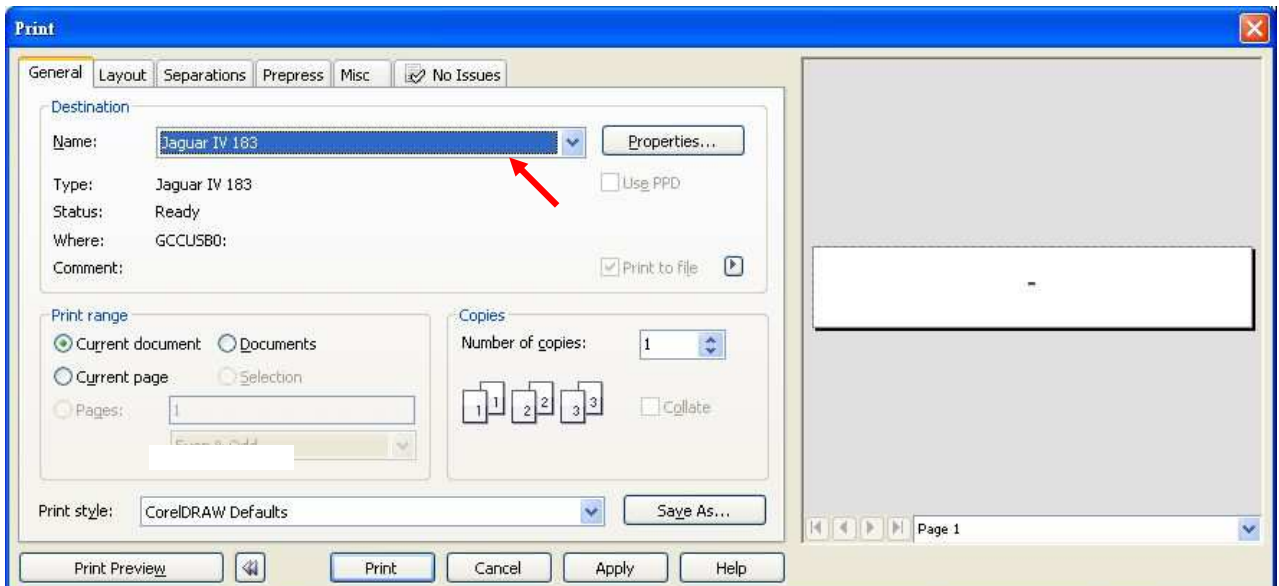
3. Adjust the value of pen width to 0.001 mm and click “OK” to save your input.



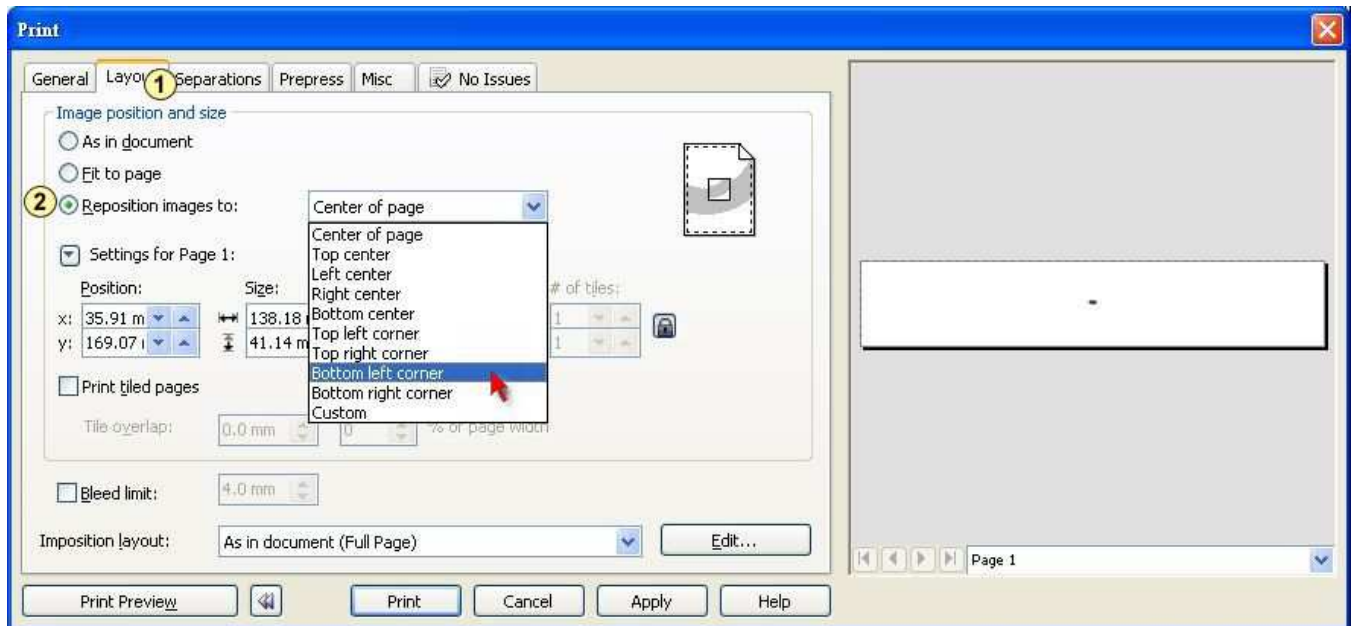
4. Select “File → Print” to output the file to your cutters.



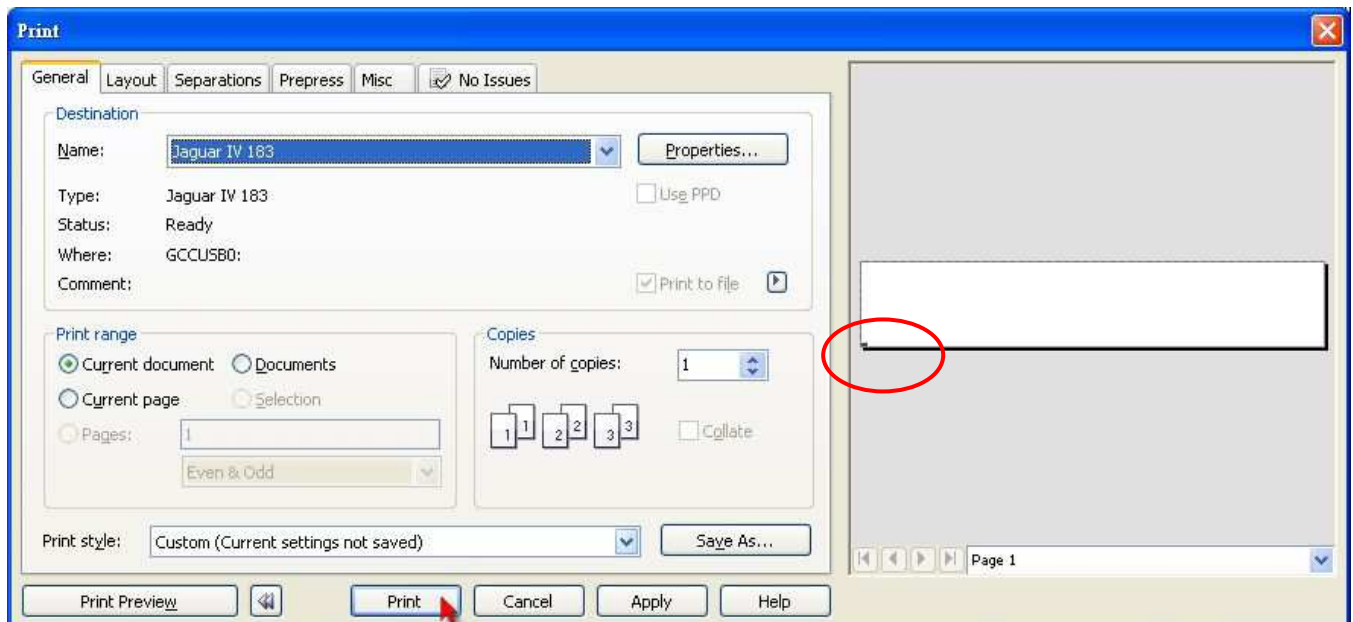
5. Choose the correct model you have installed.



6. Choose the “Layout page” and click the “Reposition images to: → Bottom left corner”.
Please note that you must put your image at the bottom left corner.



7. Go back to the General page and check that your image is at the bottom left corner. Click “Print” and get a wonderful cutting image.








Expert 24 Specification

Model	EX-24	
Max. Cutting Width	600mm (23.6")	
Max. Media Width	719mm (28.3")	
Material Thickness	0.8mm	
Max. Cutting Force	250g	
Max. Cutting Speed(Diagonal)	400 mm /sec(15.7"/sec)	
Mechanical Resolution	0.012 mm	
Software Resolution	0.025 mm	
Distance Accuracy	±0.254 mm or ±0.1% of move, whichever is greater	
Repeatability	±0.1mm	
Re-plot Memory	500 Kbyte	
Interfaces	USB 2.0 (Full Speed) & Serial (RS-232)	
Commands	HP-GL, HP-GL/2	
Configurable Origin	Yes	
Control Panel	6 LEDs/10 Keys	
Stand	Optional	
Operation Environment	Temperature	15°C~30°C / 60°F~86°F
	Humidity	25% ~ 75%

- Compatible with Windows 2000/ XP/ Vista/ 7/ 8 and MAC OS X 10.4-10.7.
- The specification and data sheet may vary with different materials used. In order to obtain the best output quality, please maintain the machine regularly and properly.
- GCC reserves the right to change the specifications at any time without notice.
- The above listed specification values are effective only when operated with media certified by GCC.

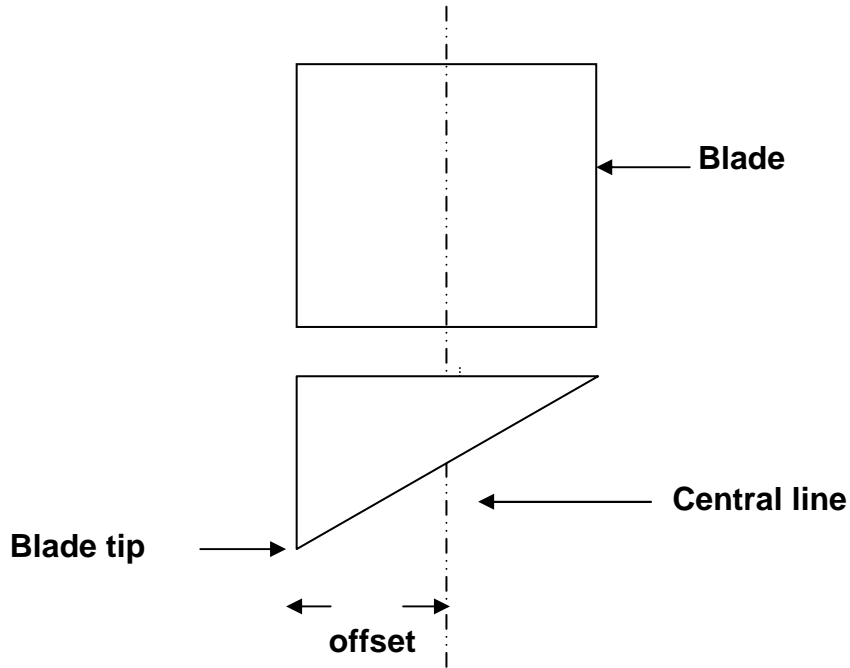
Blade Specification

20200159G	For cutting thick fluorescent and reflective vinyl. Also for cutting detailed work in standard vinyl.
	The blade is 45° with Red Cap (5-unit package), 0.25 mm offset
	
265012020G	For cutting reflective vinyl, cardboard, sandblast, flock, and stencil sharp edge.
	The blade is 60° with Green Cap , 0.50 mm blade offset
	
26500059G	For cutting thin sandblast mask and stencil with friction feed or sprocket feed machine.
	The blade is 60° with Blue Cap , 0.25 mm blade offset
	
26500060G	For Cutting small text and fine detail. Sharp blade with smallest offset.
	The blade is 0.175 mm blade offset with Black Cap
	
265012840G	For thin and delicate media such as window tint.
	The blade is 25° with Yellow Cap , 0.25 mm blade offset
	

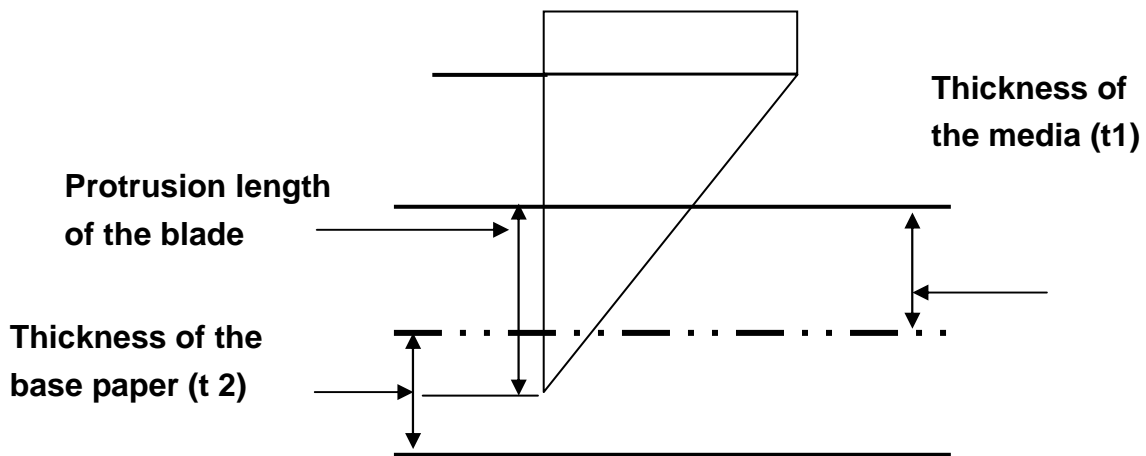
About the Tool

A generic term referring to the blade that cuts the sheet, the pen that does plotting, and the LED bombsight (option) used for pointing to the reference point.

OFFSET is the distance that the blade tip is displaced from the centerline of the blade.



Protrusion Length of the Blade



Length of protrusion = $t_1 + t_2 / 2$, but for your convenience you may just make it about 0.3mm ~ 0.5mm beyond the blade holder tip.

DirectCut Instruction

DirectCut Mac AI Plug-in is compatible with MAC OS X 10.4-10.7 (operated with Adobe Illustrator CS2-CS5).

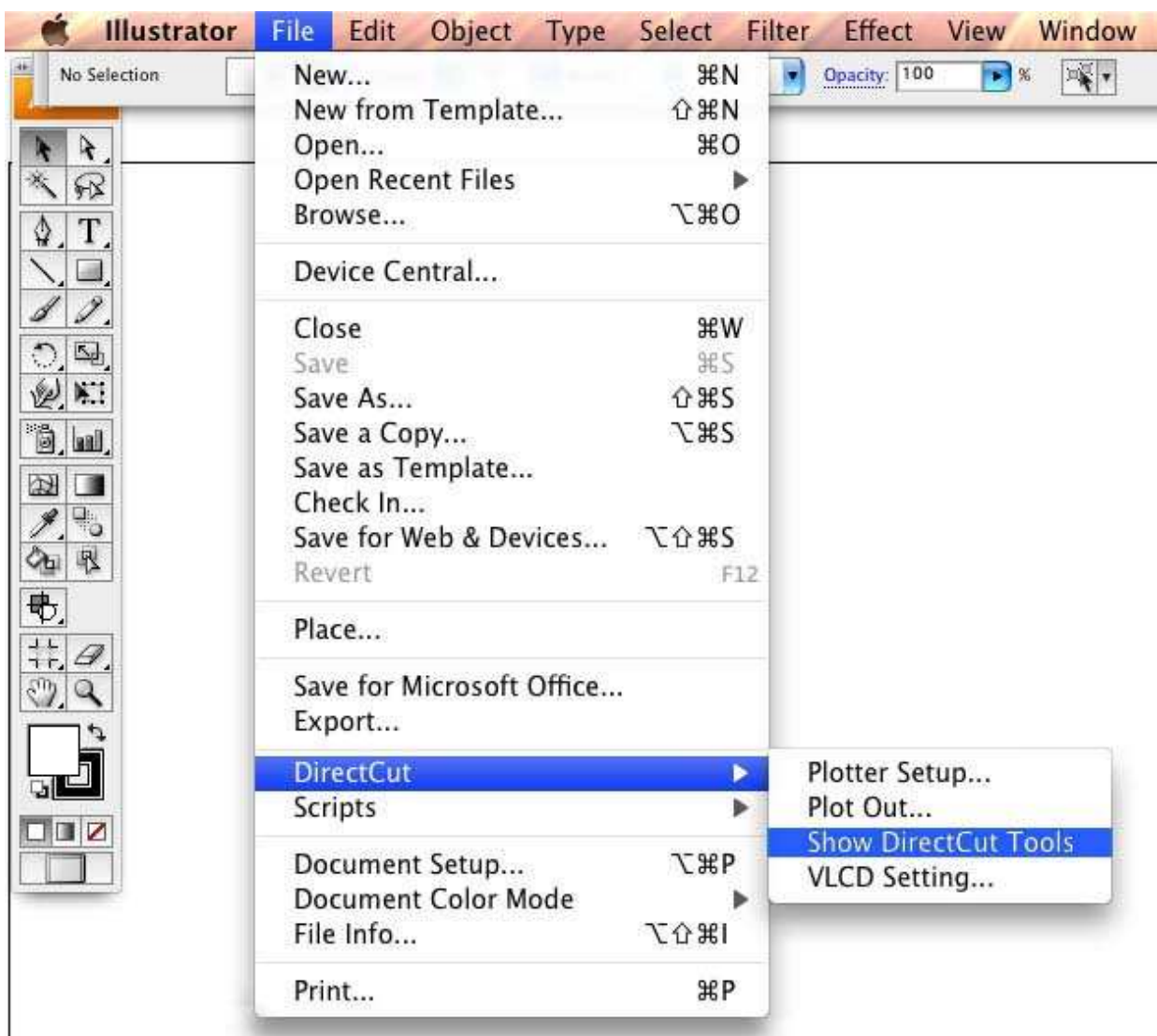
If you want to use Adobe Illustrator CS6 on your MAC, you may need Parallels Desktop software, Window OS and Windows based Adobe Illustrator CS6 to install Windows OS in your MAC computer and run Windows based software under MAC computer.

User Instructions

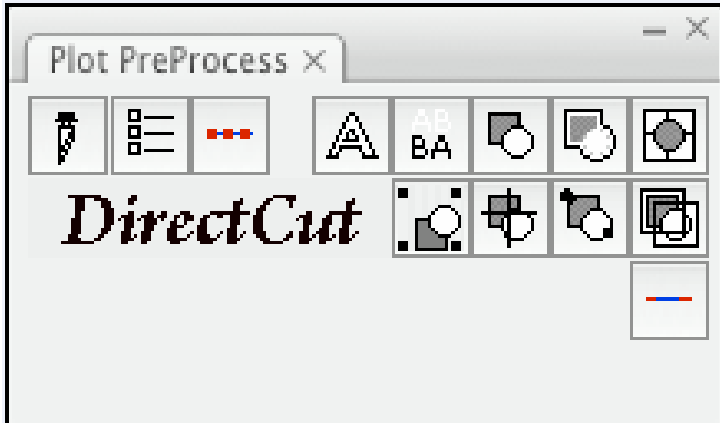
Follow the simple steps below to complete your output settings:

Step 1. Run DirectCut

1) Go to File and select “Show DirectCut Tools” under “DirectCut”



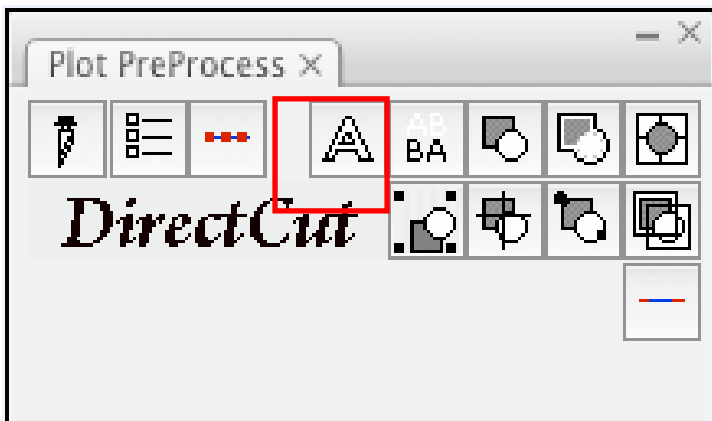
You will be presented with this dialog below:



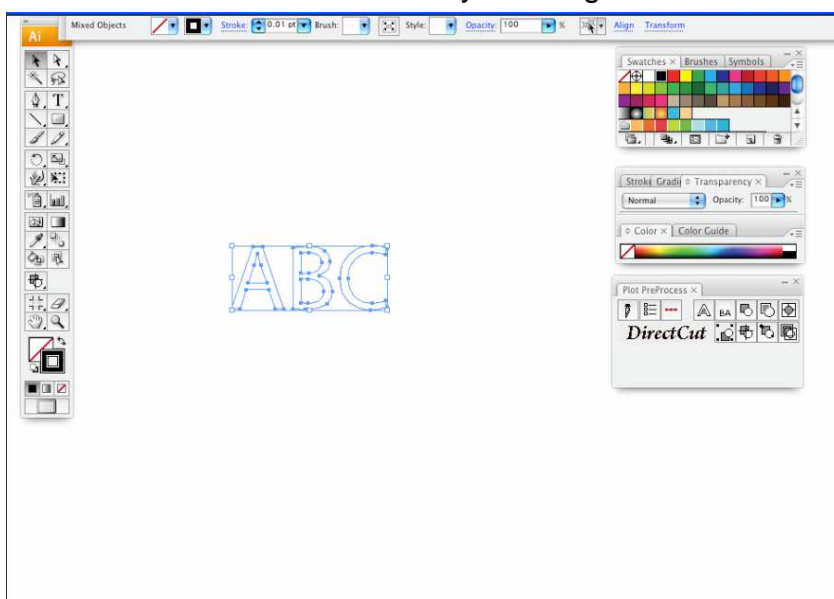
Step 2. Create/ import your image/ file.

For texts

1) Enter your texts in Adobe Illustrator, select the letters and click [Text outline] to outline the letters.



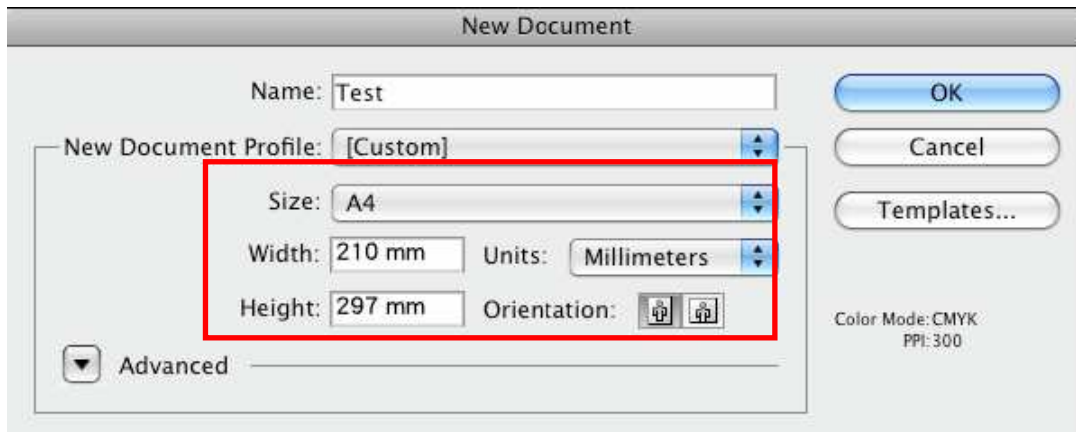
A contour line will be created for your image.



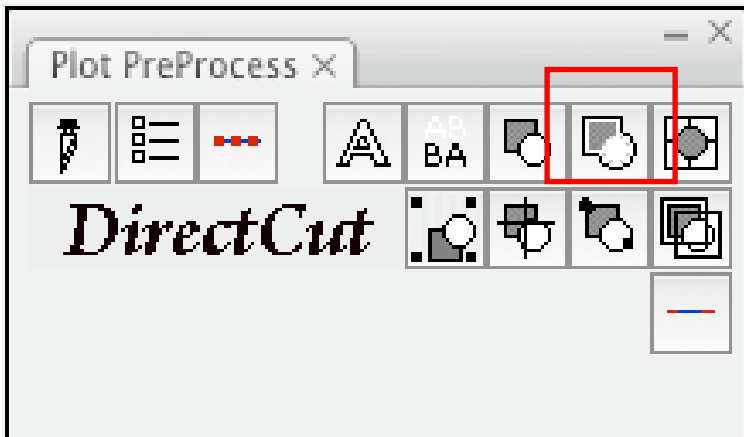
Note: The line width must be set as 0.001 mm

For Images

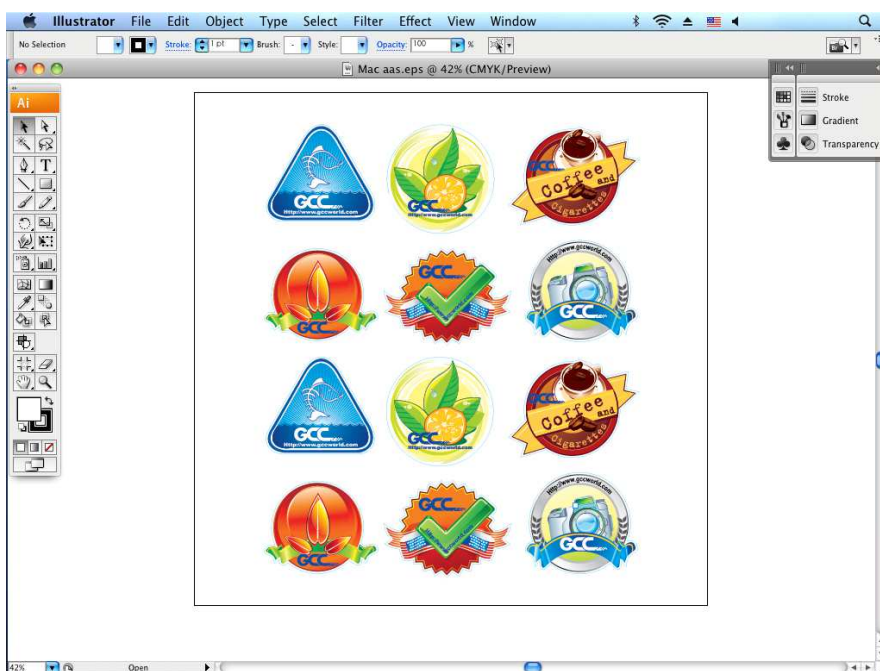
1) Open a new image on Illustrator and decide the size of your material.



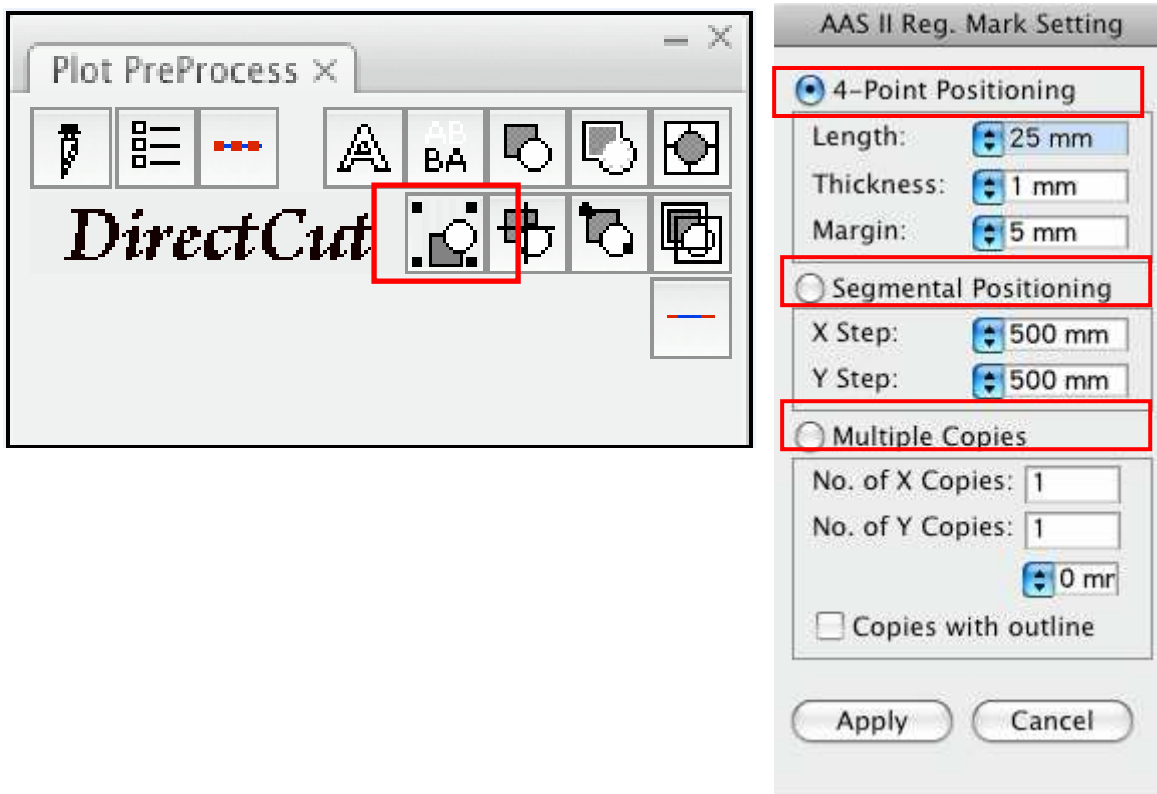
2) Select the image and click [Make outline and offset] to create outlines of graphics.



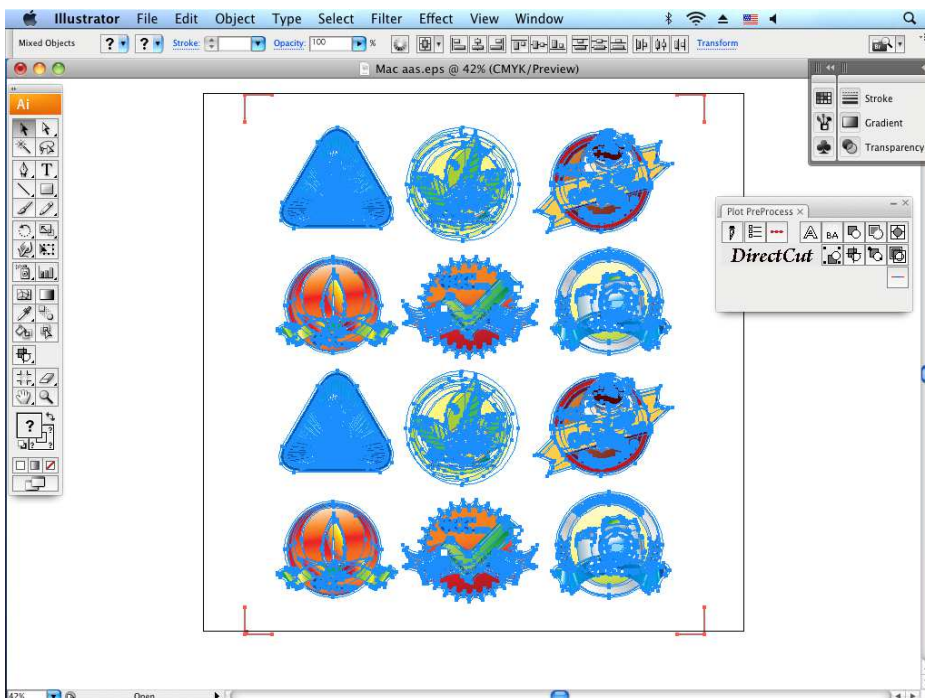
Outlines will be created for your image.



3) Click on the image and apply the AAS function by clicking the [Add registration marks] command and select the registration marks needed.

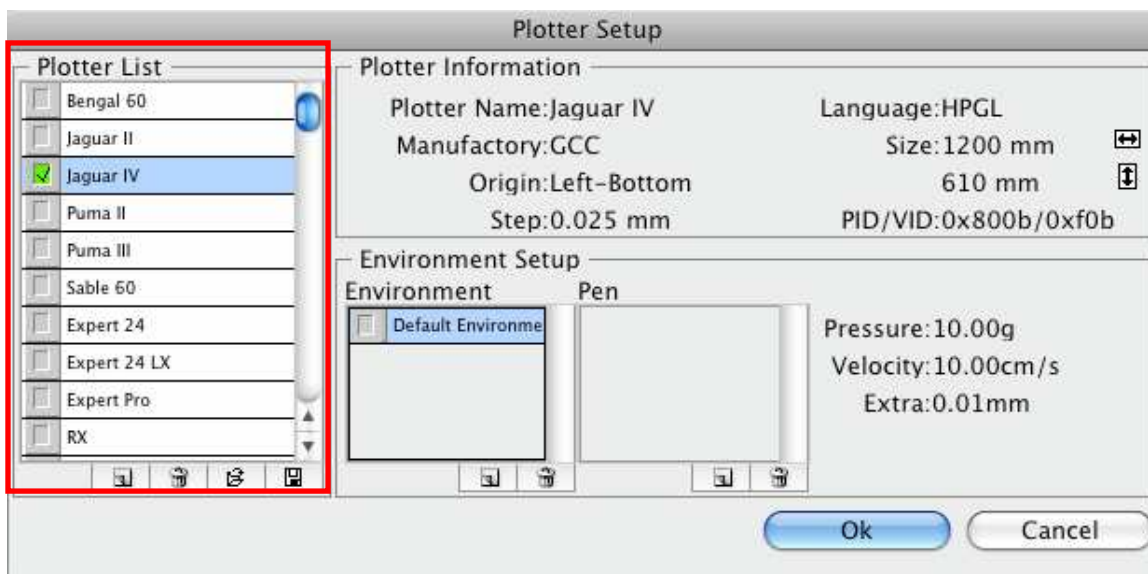
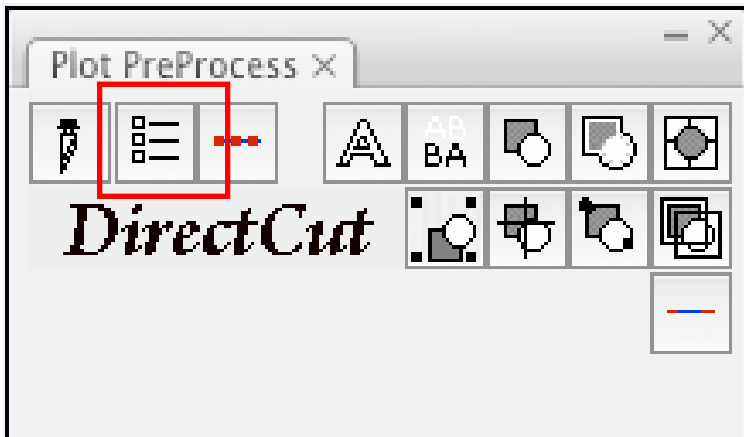


The registration marks will be created as below.

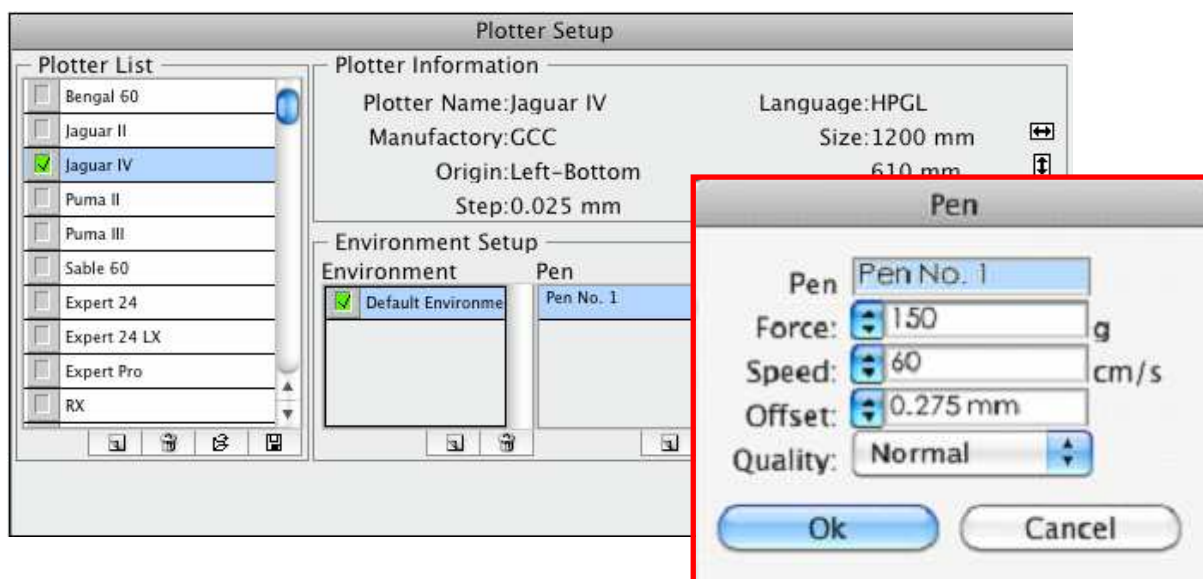


Step 3. Output

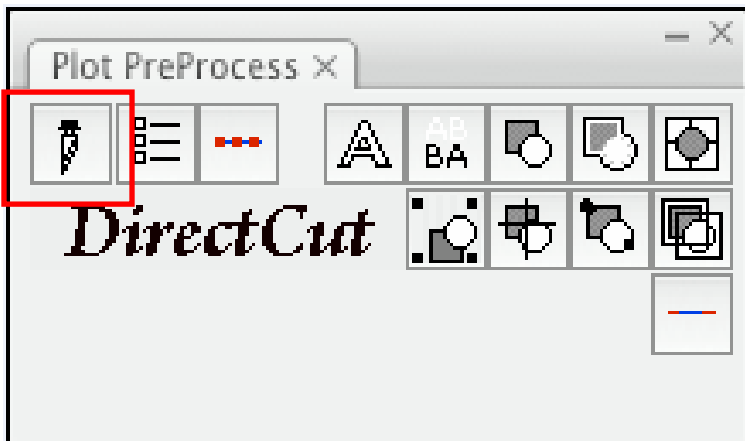
1) Click on [Plotter Setup] and select the correct model in [Plotter List].



2) Tick Default Environment to create Pen No.1 in the Pen section. Double click Pen No.1 and complete your parameter settings.



3) Select the entire object and click [Plotter Output].



4) Output the object by clicking [Export] and GCC Cutting Plotter will start cutting the image.

