

INSTRUCTIONS FOR USE - NATIONAL VOLLEYBALL POSTS

NATIONAL MODEL VOLLEYBALL POSTS

VBL/001/INT

Features include:

- Rear mounted winch for maximum safety
- Rounded posts to meet the latest specifications
- Winch tensioner to ensure and maintain correct net height
- Aluminium uprights to reduce weight and facilitate handling
- Tough and attractive powder coated finish
- Rapid and easy height adjustment premarked at the standard heights



◀ **UMPIRES STAND**

VBL/002/UMP

An excellent volleyball umpires stand, spacious, secure and stable.

The stand is adjustable in height and powder coated to offer an attractive and durable finish.

NB: Only suitable for Universal Services :

VBL/001/INT
VBL/002/INT

INSTRUCTIONS FOR USE - NATIONAL VOLLEYBALL POSTS



Volleyball post type 2, intended to be used for A class of volleyball and no other activities

VBL/001/INT

 **UNIVERSAL SERVICES**

Universal Services, Beckingham Business Park, Tolleshunt Major, Maldon, Essex CM9 8LZ
Tel: 01621 868700 Fax: 01621 860697 email info@userv.co.uk <http://www.userv.co.uk>

Revision Status	B	Info added	28.03.2014
-----------------	---	------------	------------

 **UNIVERSAL SERVICES**

PLEASE READ ALL OF THE INFORMATION ON THIS SHEET BEFORE PROCEEDING

To maintain safety and performance, your National Model Volleyball Posts should be inspected and serviced annually by **Universal Services**.

Your National Model Volleyball Posts have been designed to meet the requirements of the European Standard **EN 1271:2014** and will provide many years of excellent service. There are however, important points covered in this leaflet that must be observed in order to ensure the safety of all users.

ASSEMBLY INSTRUCTIONS

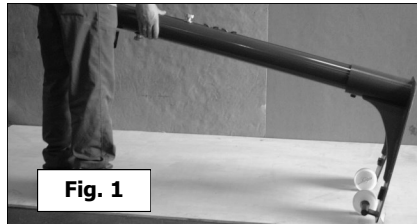


Fig. 1

1. Unpack posts and bases, select the **WINCH POST** and slide the clamping plate into the bottom of the post on the winch side (final location as Fig.2).

2. Lift post into base, tighten the two grub screws up to the clamping plate (Fig. 3).
3. Repeat the above for the **NON-WINCH POST** (clamping plate to the opposite side of the slider).
4. Safely wheel posts to the point of use as shown in Fig. 1 above.
5. Wheel both posts into position over floor plugs, remove the two wheels and screw into floor plugs (See Fig. 4a).
6. Set height adjustment to manageable height and attach head line on net to **NON-WINCH POST** (Fig. 4b). Unfurl net and pass top wire through the slot in the winch post, across pulley wheel and down to the winch connection (Fig. 5a).

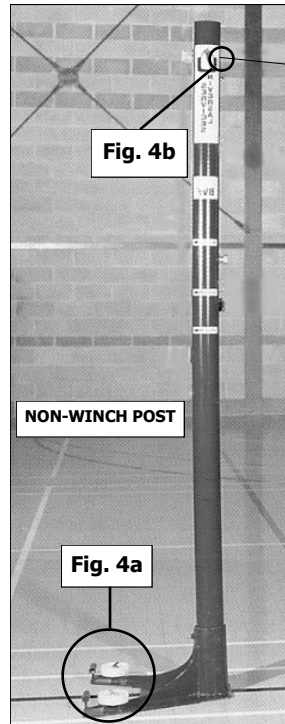


Fig. 4b

NON-WINCH POST

Fig. 4a

WINCH POST

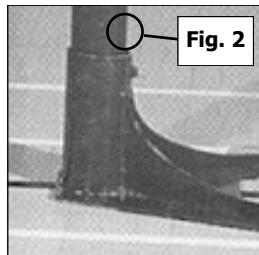


Fig. 2

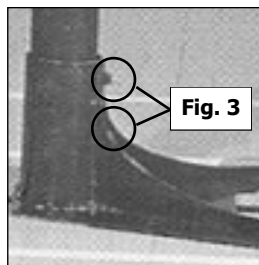


Fig. 3

7. Select the playing height by adjusting the hand screws on the slide assemblies.
8. Set net tension with the winch handle and ratchet arm in place.
9. Tie-off the bottom of the net to both posts using the cord on each end of the net (See Fig. 5b).

10. Elastics are fitted to eyelets in PVC hem and anchor bars on the posts (See Fig 5c).
11. For added player protection, Universal Services **PROTECTION PADDING** should be used
12. Check that net tension is correct, all adjustments are secure and that the winch handle is folded in.

Before using this product check that all fittings and fastenings are secure and correctly tightened.

INSTRUCTIONS FOR USE

1. Make sure that the Volleyball Posts will only be used under controlled supervision.
2. The winch assembly (Fig. 6.) has a ratchet mechanism to maintain the tension on the net and must be operated with care taking note of the following.

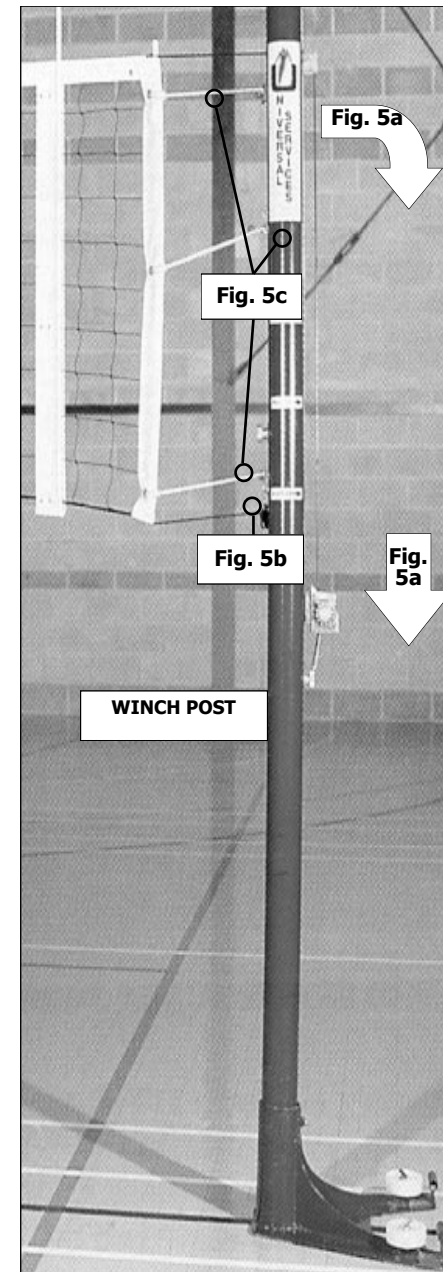


Fig. 5a

Fig. 5c

Fig. 5b

Fig. 5a

3. Releasing the ratchet whilst the net is under tension must be made easier by turning the winding handle slightly to increase the tension and relieving the pressure on the ratchet before removing it.
4. When the winch is under tension from the net, the winding handle must be held firmly before the ratchet is released and continued to be held firmly, unwinding slowly until all of the tension has been released.
5. Failure to observe the above two points may result in the winding handle spinning uncontrollably and attempting to stop it with a body part could result in a serious injury.
6. Because of the high tension and weight of the net, the wheels must never be removed from floor plugs while the net is attached.
7. Never stand on the winch for any reason.
8. Maximum recommended weigh for net (VBL/003/NET) with components (VBL/004/ANT) is 5kg .
9. When not in use remove wheels from floor plugs, screw them back to base and safely wheel posts away to a safe storage location.

How to dispose of this product

When the unit has reached the end of its life, contact your local council regarding available recycling or disposal options.

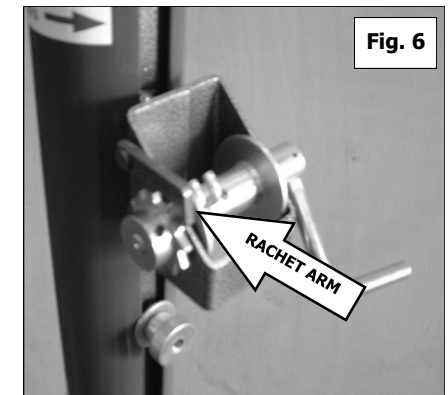


Fig. 6

RATCHET ARM